



CATALOG & APPLICATION GUIDES



**INTENTIONALLY LEFT BLANK
FOR TWO-PAGE VIEWING**

EVERYTHING YOU NEED

TO ENJOY THE ROAD AHEAD

 **CURT**
curtmfg.com

 **RANCH
HAND**
ranchhand.com

 **ARIES**
ariesautomotive.com

LUVERNE
luvernetruck.com

 **UWS**
uwsta.com

RETRAC
retracmirrors.com



 **LIPPERT**

Lippert is a leading, global manufacturer and supplier of highly engineered products and customized solutions dedicated to shaping, growing, and bettering the RV, marine, automotive, commercial vehicle, and building products industries. We combine our strategic manufacturing capabilities with the power of our winning team culture to deliver unrivaled customer service, award-winning innovation, and premium products to every industry and person we serve.

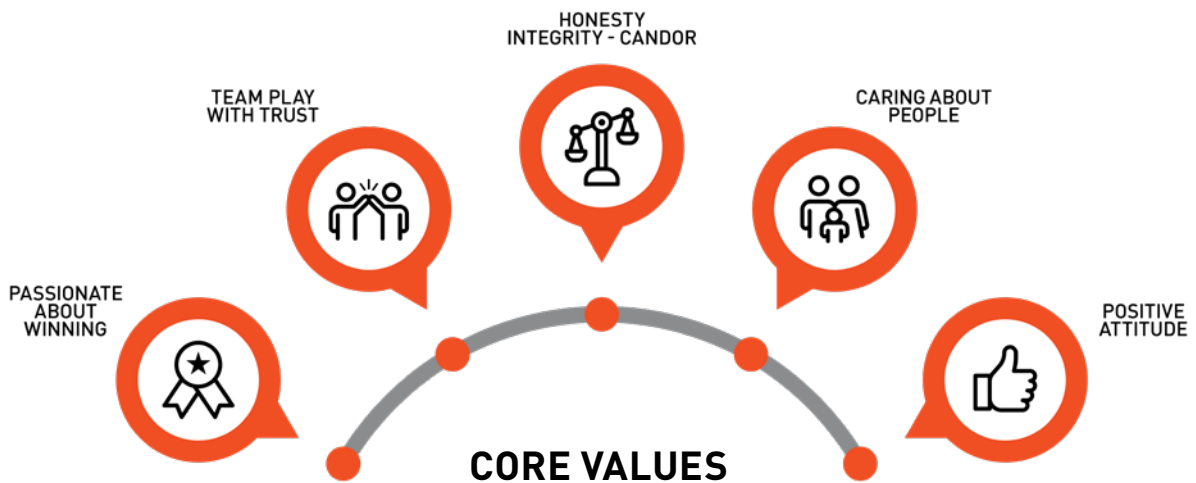


BUSINESS AS A FORCE FOR GOOD



OUR VISION: TO BE A FORCE FOR GOOD IN THE WORLD

Since 2016, Lippert has focused on designing a cultural foundation from which our success is based, and it stems from one simple driving force: At Lippert, Everyone Matters. From the shop floor to the C-suite, we simply care about people. Our culture is grounded in our five core values that we practice in our business every day.



OVER EIGHT YEARS OF IMPACT



2,000+
non-profits served



950,000+
volunteer hours



\$2,000,000+
annually donated to charity



RANCH HAND®

WHAT SETS US APART.

Our priority is that you, your family, and your vehicle are protected from the unpredictable. We've built a reputation for handcrafting the toughest products that are meticulously engineered for durability. Ride in comfort and style, confident that you're safe behind the strength of our hand-fabricated steel bumpers.

**MIDNIGHT™
SERIES**



04

**LEGEND™
SERIES**



16

**SUMMIT™
SERIES**



46

**SPORT™
SERIES**



56

MIDNIGHT™ SERIES





SEIZE THE DAY. RULE THE NIGHT.

The Midnight™ series is built for those who go hard at everything they do, from the jobsite to late nights and everything in between. Featuring a futuristic, form-fitted, and robust design that hugs your truck like a glove, our Midnight™ series is crafted for those who press forward by day and revel at night.

MIDNIGHT™ FRONT BUMPER WITH GRILLE GUARD

Product Details

- Custom, form-fitted, and lightweight design with a modern, futuristic style
- 7-gauge sheet metal bumper with 1/4" steel brackets
- Welded grille guard with 12-gauge thick tubing for enhanced protection
- Perforated 12-gauge inserts provide protection for LED lights, light bar, and grille
- Corrosion-resistant, 3/5mm thick, black carbide powder coat finish with liquid-A coat
- Accepts 32" light bar on trucks without sensors and 26" on trucks with sensors
- Retains factory fog lights or accepts 2" lights (tow hooks must be removed)
- Lower cutout for increased airflow to the engine bay
- Removable insert accommodates most front-facing cameras and sensors
- Black anodized stainless steel bolts for inserts
- Angled side wings provide increased wheel and ground clearance for off-road use
- Prominent Ranch Hand logo superimposed over a polished aluminum plate

See page 10 for application information



Hustle during the day. Revel through the night.



Built tough with 7-gauge smooth steel and form-fitted for a sleek, modern design. Includes 1/4" thick mounting brackets and 12-gauge perforated steel inserts



Fully integrated grille guard features 12-gauge tubing that provides enhanced protection and safeguards the front end from brush and road debris



Features angled wings that provide extra wheel and ground clearance for off-road excursions and a lower cut-out for increased airflow to the engine

Finish & Material

Finish:
A-coat and carbide black powder coat

Material:
Carbon steel



Ram 1500



Ram 1500

MIDNIGHT™ REAR BUMPER

Product Details

- Form fitted and lightweight design with a modern, futuristic style
- 7-gauge smooth steel with 12-gauge inserts, 1/4" brackets, and 3/4" shackles
- Corrosion-resistant, 3/5mm thick, carbide black powder coat finish
- Lightweight yet tough with improved strength through design and fabrication
- Incorporates spare tire lock cover
- Enables convenient access to factory receiver hitch
- Allows re-use of OEM trailer plug adapter
- Accommodates shackle brackets, LED license plate lights, and integrated reverse lights (non-flush with floating mounts)
- Compatible with #LEDLICENSELIGHT
- Compatible with rear-facing sensors
- Perforated 12-gauge inserts provide protection for LED lights
- Angled wings for increased ground clearance
- Integrated cut-out for 7-way trailer socket

See page 10 for application information



Modern style and robust rear protection.



Hand fabricated with smooth, 7-gauge steel and 1/4" steel mounting brackets for unbeatable strength and durability



The form-fitted style matches the Midnight front bumper and provides a tailored fit along with a sophisticated yet sporty and bold style



The perforated 12-gauge steel inserts protect LED lights and the robust 3/4" shackle brackets are dependable for towing or recovery

Finish & Material

Finish:
A-coat and carbide black powder coat

Material:
Carbon steel



Chevrolet Silverado



Scan for current applications
or visit ranchhand.com



MIDNIGHT™ SERIES APPLICATION GUIDE

Midnight Series Bumpers

Make / Model	Style	Years	Part #	Product Description	Retains			
					Parking Sensors	Front Camera	Tow Hooks	Fog Lights
Chevrolet								
Silverado 1500	Excluding diesel	19 - 21	MFC19HBM1	Front Bumper with Grille Guard	Yes	--	No	Yes
		19 - 21	MBC19HBMSL	Rear Bumper	Yes	--	--	--
Silverado 1500 LTD	Excluding diesel	22 - 22	MFC19HBM1	Front Bumper with Grille Guard	Yes	--	No	Yes
		22 - 22	MBC19HBMSL	Rear Bumper	Yes	--	--	--
Silverado 2500 HD / 3500 HD	--	20 - 23	MFC201BM1	Front Bumper with Grille Guard	Yes	Yes	Yes	Yes
		20 - 23	MBC201BMSL	Rear Bumper	Yes	--	--	--
		15 - 19	MFC151BM1	Front Bumper with Grille Guard	Yes	--	No	Yes
		15 - 19	MBC151BMSL	Rear Bumper	Yes	--	--	--
Dodge								
Ram 2500 / 3500	--	10 - 10	MFD101BM1	Front Bumper with Grille Guard	Yes	--	No	Yes
		10 - 10	MBC101BMSL	Rear Bumper	Yes	--	--	--
Ford								
F-150	--	24 - 24	MFF24HBM1	Front Bumper with Grille Guard	Yes	Yes	No	No
		24 - 24	MBF24HBMSL	Rear Bumper	Yes	--	--	--
		21 - 23	MFF21HBM1	Front Bumper with Grille Guard	Yes	Yes	No	No
		18 - 20	MFF18HBM1	Front Bumper with Grille Guard	Yes	Yes	No	Yes
		15 - 23	MBF15HBMSL	Rear Bumper	Yes	--	--	--
F-250 / F-350 Super Duty	--	17 - 22	MFF201BM1	Front Bumper with Grille Guard	--	Yes	No	Yes
		17 - 22	MBF201BMSL	Rear Bumper	--	--	--	--

Midnight Series Bumpers

Make / Model	Style	Years	Part #	Product Description	Retains			
					Parking Sensors	Front Camera	Tow Hooks	Fog Lights
GMC								
Sierra 1500	Excluding diesel	19 - 21	MFG19HBM1	Front Bumper with Grille Guard	Yes	--	No	Yes
		19 - 21	MBC19HBMSL	Rear Bumper	Yes	--	--	--
Sierra 1500 Limited	Excluding diesel	22 - 22	MFG19HBM1	Front Bumper with Grille Guard	Yes	--	No	Yes
		22 - 22	MBC19HBMSL	Rear Bumper	Yes	--	--	--
Sierra 2500 HD / 3500 HD	--	20 - 23	MFG201BM1	Front Bumper with Grille Guard	Yes	--	Yes	Yes
		20 - 23	MBC201BMSL	Rear Bumper	Yes	--	--	--
		15 - 19	MFG151BM1	Front Bumper with Grille Guard	Yes	--	No	Yes
		15 - 19	MBC151BMSL	Rear Bumper	Yes	--	--	--
Ram								
1500	Excluding diesel	19 - 24	MFD19HBM1	Front Bumper with Grille Guard	Yes	--	No	Yes
	Side exhaust only	19 - 24	MBD19HBMSL	Rear Bumper	Yes	--	--	--
	Rear exhaust only	19 - 24	MBD19HBMSLE	Rear Bumper	Yes	--	--	--
2500 / 3500	--	19 - 24	MFD191BM1	Front Bumper with Grille Guard	Yes	Yes	No	Yes
		19 - 24	MBD191BMSL	Rear Bumper	Yes	--	--	--
	Excluding Tradesman	11 - 18	MFD101BM1	Front Bumper with Grille Guard	Yes	--	No	Yes
	--	11 - 18	MBD101BMSL	Rear Bumper	Yes	--	--	--
Toyota								
Tacoma	--	16 - 23	MFT16MBM1	Front Bumper with Grille Guard	Yes	Yes	Yes	Yes
		16 - 23	MBT16MBMSL	Rear Bumper	Yes	--	--	--
Tundra	--	14 - 21	MFT14HBM1	Front Bumper with Grille Guard	Yes	No	Yes	Yes
		14 - 21	MBT14HBMSL	Rear Bumper	Yes	--	--	--

3"

MIDNIGHT™ RUNNING STEPS

Product Details

- Textured carbide black powder coat finish
- Co-cured in an industry-leading, rust-resistant, liquid A-coat
- 14-gauge 3" top pipe and 1-1/2" loop pipe for enhanced rigidity
- Truck-specific step configuration to match door layout and maximize safety
- 4" wide steps for comfortable entry and exit
- 12-gauge, punched steel foot plates with raised, high-traction treads
- Prominent Ranch Hand cowboy logo cut into each front step
- 3/16" thick brackets with truck-specific mounting points for easy installation
- Available in 4-step and 6-step configurations for easy access into extended cabs and truck beds
- Designed, cut, fabricated, welded, and finished in the USA

See page 14 for application information



Step up into your rig with confidence and style.



Ranch Hand running steps are constructed from 3" tubing and 3/16" thick brackets that secure the steps to the vehicle in the factory location without the need to drill extra holes



Front step plate is cut with the official Ranch Hand logo and features a 12-gauge punched pattern of raised steel treads to promote dependable traction



4" wide steps provide a spacious platform for comfortable entry and exit. Each set features 1-1/2" loop pipes for enhanced rigidity

Finish & Material

Finish:
A-coat and carbide black powder coat

Material:
Carbon steel



Silverado 1500



Scan for current applications
or visit ranchhand.com

MIDNIGHT™ RUNNING STEPS APPLICATION GUIDE

Midnight Series Running Steps

Make / Model	Years	Cab Length	Bed Length	Bed Type	Part #	Steps	Step Length
Chevrolet							
Silverado 1500	19 - 25	Crew	--	--	MRSC191C1B4S	4-step	Cab length
	19 - 25	Crew	6' 6"	Standard	MRSC191C6B6S	6-step	Wheel-to-Wheel
	07 - 18	Crew	--	--	MRSC071C1B4S	4-step	Cab length
	07 - 18	Crew	6' 6"	Standard	MRSC071C6B6S	6-step	Wheel-to-Wheel
Silverado 1500 LTD	22 - 22	Crew	--	--	MRSC191C1B4S	4-step	Cab length
	22 - 22	Crew	6' 6"	Standard	MRSC191C6B6S	6-step	Wheel-to-Wheel
Silverado 2500 HD	20 - 25	Crew	--	--	MRSC191C1B4S	4-step	Cab length
	20 - 25	Crew	6' 5"	Standard	MRSC191C6B6S	6-step	Wheel-to-wheel
	07 - 19	Crew	--	--	MRSC071C1B4S	4-step	Cab length
	07 - 19	Crew	6' 6"	Standard	MRSC071C6B6S	6-step	Wheel-to-wheel
Silverado 3500 HD	20 - 25	Crew	--	--	MRSC191C1B4S	4-step	Cab length
	20 - 25	Crew	6' 5"	Standard	MRSC191C6B6S	6-step	Wheel-to-wheel
	07 - 19	Crew	--	--	MRSC071C1B4S	4-step	Cab length
	11 - 19	Crew	6' 5"	Standard	MRSC071C6B6S	6-step	Wheel-to-wheel
Dodge							
Ram 1500	09 - 10	Crew	6' 4"	Standard	MRSD101C6B6S	6-step	Wheel-to-wheel
	09 - 10	Crew	--	--	MRSD091C1B4S	4-step	Cab length
Ram 2500	10 - 10	Crew	6' 4"	Standard	MRSD101C6B6S	6-step	Wheel-to-wheel
	10 - 10	Crew	8'	Standard	MRSD101C8B6S	6-step	Wheel-to-wheel
	09 - 10	Crew	--	--	MRSD091C1B4S	4-step	Cab length
	10 - 10	Extended Crew	6' 4"	Standard	MRSD101M6B6S	6-step	Wheel-to-wheel
Ram 3500	10 - 10	Crew	6' 4"	Standard	MRSD101C6B6S	6-step	Wheel-to-wheel
	10 - 10	Crew	8'	Standard	MRSD101C8B6S	6-step	Wheel-to-wheel
	09 - 10	Crew	--	--	MRSD091C1B4S	4-step	Cab length
	10 - 10	Extended Crew	6' 6"	Standard	MRSD101M6B6S	6-step	Wheel-to-wheel

Midnight Series Running Steps

Make / Model	Years	Cab Length	Bed Length	Bed Type	Part #	Steps	Step Length
Ford							
F-150	15 - 24	Crew	--	--	MRSF151C1B4S	4-step	Cab length
	15 - 24	Crew	6' 6"	Standard	MRSF171C6B6S	6-step	Wheel-to-wheel
	15 - 24	Extended	6' 6"	Standard	MRSF151S6B6S	6-step	Wheel-to-wheel
	15 - 24	Extended	8'	Standard	MRSF171S8B6S	6-step	Wheel-to-wheel
F-150 Lightning	22 - 24	Crew	--	--	MRSF151C1B4S	4-step	Cab length
F-250 Super Duty	17 - 24	Crew	--	--	MRSF151C1B4S	4-step	Cab length
	17 - 24	Crew	6' 9"	Standard	MRSF171C6B6S	6-step	Wheel-to-wheel
	17 - 24	Crew	8'	Standard	MRSF171C8B6S	6-step	Wheel-to-wheel
	17 - 24	Extended	6' 9"	Standard	MRSF151S6B6S	6-step	Wheel-to-wheel
	17 - 24	Extended	8'	Standard	MRSF171S8B6S	6-step	Wheel-to-wheel
F-350 Super Duty	17 - 24	Crew	--	--	MRSF151C1B4S	4-step	Cab length
	17 - 24	Crew	6' 9"	Standard	MRSF171C6B6S	6-step	Wheel-to-wheel
	17 - 24	Crew	8'	Standard	MRSF171C8B6S	6-step	Wheel-to-wheel
	17 - 24	Crew	8'	Dually	MRSF17DC8B6S	6-step	Wheel-to-wheel
	17 - 24	Extended	6' 5"	Standard	MRSF151S6B6S	6-step	Wheel-to-wheel
	17 - 24	Extended	8'	Standard	MRSF171S8B6S	6-step	Wheel-to-wheel
F-450 Super Duty	17 - 24	Crew	--	--	MRSF151C1B4S	4-step	Cab length
	17 - 24	Crew	8'	Dually	MRSF17DC8B6S	6-step	Wheel-to-wheel
GMC							
Sierra 1500	19 - 25	Crew	--	--	MRSC191C1B4S	4-step	Cab length
	19 - 25	Crew	6' 6"	Standard	MRSC191C6B6S	6-step	Wheel-to-Wheel
	07 - 18	Crew	--	--	MRSC071C1B4S	4-step	Cab length
	07 - 18	Crew	6' 6"	Standard	MRSC071C6B6S	6-step	Wheel-to-Wheel
Sierra 1500 Limited	22 - 22	Crew	--	--	MRSC191C1B4S	4-step	Cab length
	22 - 22	Crew	6' 6"	Standard	MRSC191C6B6S	6-step	Wheel-to-Wheel
Sierra 2500 HD	20 - 25	Crew	--	--	MRSC191C1B4S	4-step	Cab length
	20 - 25	Crew	6' 5"	Standard	MRSC191C6B6S	6-step	Wheel-to-wheel
	07 - 19	Crew	--	--	MRSC071C1B4S	4-step	Cab length
	07 - 19	Crew	6' 5"	Standard	MRSC071C6B6S	6-step	Wheel-to-wheel
Sierra 3500 HD	20 - 25	Crew	--	--	MRSC191C1B4S	4-step	Cab length
	20 - 25	Crew	6' 5"	Standard	MRSC191C6B6S	6-step	Wheel-to-wheel
	07 - 19	Crew	--	--	MRSC071C1B4S	4-step	Cab length
	11 - 19	Crew	6' 5"	Standard	MRSC071C6B6S	6-step	Wheel-to-wheel
Ram							
1500	19 - 25	Crew	--	--	MRSD19HC1B4S	4-step	Cab length
	11 - 18	Crew	--	--	MRSD091C1B4S	4-step	Cab length
	11 - 18	Crew	6' 4"	Standard	MRSD101C6B6S	6-step	Wheel-to-wheel
1500 Classic	19 - 24	Crew	--	--	MRSD091C1B4S	4-step	Cab length
	19 - 24	Crew	6' 4"	Standard	MRSD101C6B6S	6-step	Wheel-to-wheel
2500	11 - 24	Crew	--	--	MRSD091C1B4S	4-step	Cab length
	11 - 24	Crew	6' 4"	Standard	MRSD101C6B6S	6-step	Wheel-to-wheel
	11 - 24	Crew	8'	Standard	MRSD101C8B6S	6-step	Wheel-to-wheel
	11 - 24	Extended Crew	6' 4"	Standard	MRSD101M6B6S	6-step	Wheel-to-wheel
3500	11 - 24	Crew	--	--	MRSD091C1B4S	4-step	Cab length
	11 - 24	Crew	6' 4"	Standard	MRSD101C6B6S	6-step	Wheel-to-wheel
	11 - 24	Crew	8'	Standard	MRSD101C8B6S	6-step	Wheel-to-wheel
	11 - 24	Extended Crew	6' 4"	Standard	MRSD101M6B6S	6-step	Wheel-to-wheel

LEGEND™

SERIES





WHAT MAKES A LEGEND?

Legends aren't born — they're made. The Legend™ series is made for those who work hard and play even harder. Fabricated by hand in Shiner, Texas, the Legend™ series is built tough for long days on the road. It's an icon that offers maximum protection, rugged durability, and gives you the peace of mind you need that you, your family, and your vehicle are protected from the unpredictable.

LEGEND™ FRONT BUMPER WITH GRILLE GUARD

Product Details

- The original, heavy-duty, 'ranch-style' front bumper made for hardworking trucks
- Built from 4" schedule-40 pipe and diamond-plate steel for dependable strength
- One-piece welded fabrication prevents rattling, while perforated 12-gauge steel protects the truck grille from brush and road debris
- Constructed with 5/16" uprights for high-tensile strength and durability
- Frame-mounted in four locations to reduce vibration and ensure a secure fit
- Comes standard with 2" receiver for tow hook, winch mount, or other attachments
- Tough polyester black powder coat finish for superior corrosion resistance
- Retains factory fog lights and tow hooks (if equipped) on most vehicles
- Compatible with front-facing sensors (Options available to accommodate front-facing cameras)
- Vehicle-specific mesh pattern for OE look

See page 28 for application information



Built for hard work and the ranching lifestyle.



The Legend front bumper with grille guard is the original, heavy-duty, "ranch style" front bumper, and is built to handle the day-to-day rigors of a hardworking truck



Features thick 4" schedule-40 pipe that fully contours and protects the front end and thick, diamond-plate steel that provides solid, reliable strength



The bumper and grille guard are fully welded together as one piece with no expanded metal, eliminating the rattling that occurs with modular bumpers

Finish & Material

Finish:
Gloss black powder coat

Material:
Carbon steel



Chevrolet 3500HD



Ram 3500 Longhorn

LEGEND™ BULLNOSE FRONT BUMPER

Product Details

- The original, heavy-duty, 'ranch-style' front bumper made for hard-working trucks
- 2" thick, 12-gauge bullnose for increased protection
- Constructed with 5/16" uprights for high-tensile strength and durability
- Contoured skirts to protect the underside of the truck
- Built from 4" schedule-40 pipe and diamond-plate steel for dependable strength
- One-piece welded fabrication prevents rattling and loosening of pieces
- Frame-mounted in four locations to reduce vibration and ensure a secure fit
- Comes standard with 2" receiver for tow hook, winch mount, or other attachments
- Tough polyester black powder coat finish for superior corrosion resistance
- Retains factory fog lights and tow hooks (if equipped) on most vehicles
- Compatible with front-facing cameras and sensors
- Includes light mounting tabs and license plate mounting holes

See page 28 for application information



Add serious style and attitude to your truck.



The Legend bullnose front bumper features thick, 2" 12-gauge tubing and is designed with off-road, Baja style and contoured skirts for improved tire clearance



Features thick, 4" schedule-40 pipe that fully contours and protects the front end and thick diamond-plate steel that provides solid, reliable strength



Features a standard 2" receiver for towing or mounting a winch or other accessories, and includes tabs for mounting lights and pre-drilled license plate holes

Finish & Material

Finish:
Gloss black powder coat

Material:
Diamond-plate steel



Chevrolet 2500HD



Ford F-250

LEGEND™ REAR BUMPER

Product Details

- The original, heavy-duty, 'ranch-style' rear bumper made for hardworking trucks
- Built from 4" schedule-40 pipe and diamond-plate steel for dependable strength
- Tested for 10,000 lbs. towing capacity and 1,000 lbs. tongue weight (select models only rated for 5,000 lbs.)
- Do not exceed vehicle towing capacity
- Tough polyester black powder coat finish for superior corrosion resistance
- Optional bolt-on receiver hitch #RHUOO1BLB (see page 26)
- Select models come standard with LED lights
- Integrated cut-out for 6- or 7-way trailer socket (varies by model)

See page 28 for application information



Ruggedly built to tackle any tough job that comes its way.



The Legend is the original, heavy-duty, "ranch style" rear bumper and is built to handle the day-to-day rigors of working on the ranch or job site



Features thick, 4" schedule-40 pipe that fully contours and protects the rear end and thick diamond-plate steel that provides solid, reliable strength



Rear bumper is V-5 tested up to 10,000 lbs. towing capacity (5,000 lbs. on select models) with an optional bolt-on receiver hitch (#RHUOO1BLB, see page 26)

Finish & Material

Finish:
Gloss black powder coat

Material:
Carbon steel



Ford F-250



LEGEND™ GRILLE GUARD

Product Details

- Constructed from 12-gauge steel tubing and 5/16" uprights for unmatched strength
- One-piece welded fabrication prevents rattling and perforated 12-gauge steel protects the truck grille
- Frame-mounted in four locations to reduce vibration and ensure a secure fit
- Custom punched grille inserts to match truck manufacturer's grille pattern
- Wraparound brush guards for greater front-end coverage and a streamlined look
- Black powder coat finish for superior corrosion resistance
- Compatible with front-facing sensors (Options available to accommodate front-facing cameras)
- Vehicle-specific mesh pattern for OE look

See page 28 for application information



The toughest grille guard around.



Made with 12-gauge tubing and 5/16" uprights for high tensile strength that provides unrivaled toughness and durability



Fully welded into one piece with no expanded metal to eliminate the troublesome rattling that occurs with modular grille guards



Frame-mounted in four locations for a secure fit and features custom punched grille inserts to match the truck's grille pattern

Finish & Material

Finish:
Gloss black powder coat

Material:
Carbon steel



Ford F-250



Toyota Tacoma



BUMPER ACCESSORIES

6" Oval LED Light

- Designed for use as a back-up light or flood light for extra nighttime visibility
- 6" wide, flush-mount style flood light with oval design provides improved rear visibility
- Constructed with LEDs for bright, long-lasting light
- Fitted with blunt-cut wires for easy installation
- Includes one LED light only



LEDLIGHTCLEAR



Part #	Fits
LEDLIGHTCLEAR	Select Legend and Sport rear bumpers

2" Bolt-On Bumper Hitch Receiver Tube

- Rated for 10,000 lbs. GTW and 1,000 lbs. TW
- Standard 2" receiver tube accepts a ball mount, tow hook, or other accessories
- Weight capacity limited to the lowest-rated component of the towing system



RHU001BLB



Part #	Fits
RHU001BLB	Legend rear bumper

Universal Rubber Upright Pads

- Rubber stripping to protect grille guard uprights and finish
- Constructed from tough black rubber
- Easy, friction-fit installation
- Includes two rubber strips



RUPU



Part #	Fits
RUPU	Legend grille guard and Legend, Summit and Sport front bumpers with grille guard

LED License Plate Light

- Provides nighttime visibility to license plate
- Fits Ranch Hand rear bumper license plate light hole
- Constructed with LEDs for bright, long-lasting light
- Blunt-cut wires for easy installation
- Includes one LED light only



LEDLICENSELIGHT

Part #	Fits
LEDLICENSELIGHT	Midnight, Legend and Sport rear bumpers

Sensor Relocation Bracket Kits

- Intended for relocating vehicle sensors after grille guard installation
- Strong 14-gauge steel construction
- Includes one relocation bracket, carriage bolts, nuts, pigtails, and grommets
- Grille guard sold separately
- Fits select vehicle applications

See ranchhand.com for application information





Ford F-250 Super Duty



Toyota Tacoma



Scan for current applications
or visit ranchhand.com



LEGEND™ SERIES APPLICATION GUIDE

Legend Series Bumpers & Grille Guards

Make / Model	Style	Years	Footnote	Part #	Product Description	Lights	Retains			
							Park Sens	Frnt Cam	Tow Hks	Fog Lts
Chevrolet										
Avalanche	--	07 - 13	--	GGC07HBL1	Grille Guard	--	No	No	Yes	Yes
Avalanche 1500	Excl. models with cladding	03 - 06	--	GGC06HBL1	Grille Guard	--	No	No	Yes	Yes
Avalanche 2500	Excl. models with cladding	03 - 06	--	GGC06HBL1	Grille Guard	--	No	No	Yes	Yes
Blazer	--	92 - 99	--	FBC881BLR	Front Bumper with Grille Guard	--	No	No	Yes	No
		92 - 99	--	GGC881BL1	Grille Guard	--	No	No	Yes	Yes
C/K 1500	--	88 - 99	--	FBC881BLR	Front Bumper with Grille Guard	--	No	No	Yes	No
		88 - 99	--	GGC881BL1	Grille Guard	--	No	No	Yes	Yes
C/K 2500 / 3500	--	88 - 00	--	FBC881BLR	Front Bumper with Grille Guard	--	No	No	Yes	No
		88 - 00	--	GGC881BL1	Grille Guard	--	No	No	Yes	Yes
Colorado	With factory tow hooks	23 - 24	12	GGC23MBL1	Grille Guard	--	Yes	Yes	No	Yes
Silverado 1500	Excl. ZR2	22 - 25	10	GGC22HBL1	Grille Guard	--	Yes	Yes	Yes	Yes
	--	19 - 21	1	GGC19HBL1C	Grille Guard	--	No	Yes	Yes	Yes
		19 - 21	1	GGC19HBL1	Grille Guard	--	No	No	Yes	Yes
		16 - 18	2	GGC16HBL1	Grille Guard	--	No	No	Yes	Yes
		14 - 15	2	GGC14HBL1S	Grille Guard	--	No	No	Yes	Yes
		07 - 13	--	GGC08HBL1	Grille Guard	--	No	No	Yes	Yes
		03 - 06	--	GGC06HBL1	Grille Guard	--	No	No	Yes	Yes
		99 - 02	--	GGC99HBL1	Grille Guard	--	No	No	Yes	Yes
99 - 06	11, 12, 14		BBC998BLS	Rear Bumper	No	No	--	--	--	

1. Use PSC19HBL1 for sensor accom.
2. Use PSC16HBL1 for sensor accom.
3. Use PSG19HBL1 for sensor accom.
4. Sport, Express, and Tradesman may require bumper trimming
5. Add'l GGF114BP bolt pack required
6. May trigger parking sensor on Denali

7. Denali requires grille trimming
8. Incl. knock out for engine block heater plug
9. Use PSF19MBP for sensor accommodation
10. Tow rating of 5,000 / 500 lbs.
11. Tow rating of 10,000 / 1,000 lbs.

12. Skirt length 8"
13. Skirt length 10"
14. Retains fact. rec.
15. Does not retain factory receiver
16. Must use PSC22HBL1 for sensor accommodation

17. May require use of PSF231BL1 for sensor accommodation

Applications continued on the following page

Legend Series Bumpers & Grille Guards

Make / Model	Style	Years	Footnote	Part #	Product Description	Lights	Retains			
							Park Sens	Frnt Cam	Tow Hks	Fog Lts
Chevrolet (continued)										
Silverado 1500 Classic	--	07 - 07	--	GGC06HBL1	Grille Guard	--	No	No	Yes	Yes
		07 - 07	11, 12, 14	BBC998BLS	Rear Bumper	No	No	--	--	--
Silverado 1500 LD	--	19 - 19	2	GGC16HBL1	Grille Guard	--	No	No	Yes	Yes
Silverado 1500 LTD	Excl. diesel	22 - 22	1	GGC19HBL1C	Grille Guard	--	No	Yes	Yes	Yes
		22 - 22	1	GGC19HBL1	Grille Guard	--	No	No	Yes	Yes
Silverado 1500 HD	--	01 - 06	11, 12, 14	BBC998BLS	Rear Bumper	No	No	--	--	--
Silverado 1500 HD Classic	--	07 - 07	11, 12, 14	BBC998BLS	Rear Bumper	No	No	--	--	--
Silverado 2500	Excl. 2500 HD	99 - 04	11, 12, 14	BBC998BLS	Rear Bumper	No	No	--	--	--
Silverado 2500 HD	--	24 - 24	--	FBC241BLR	Front Bumper with Grille Guard	--	Yes	Yes	Yes	Yes
		24 - 24	3	GGC241BL1	Grille Guard	--	Yes	Yes	Yes	Yes
		20 - 23	--	BTC201BLR	Bullnose Front Bumper	--	Yes	Yes	Yes	Yes
		20 - 23	--	FBC201BLR	Front Bumper with Grille Guard	--	Yes	No	Yes	Yes
		20 - 23	3	GGC201BL1C	Grille Guard	--	No	Yes	Yes	Yes
		20 - 23	3	GGC201BL1	Grille Guard	--	No	No	Yes	Yes
		15 - 19	--	BTC151BLR	Bullnose Front Bumper	--	Yes	No	Yes	Yes
		15 - 19	--	FBC151BLR	Front Bumper with Grille Guard	--	Yes	No	Yes	Yes
		15 - 19	--	GGC151BL1	Grille Guard	--	No	No	Yes	Yes
		15 - 19	--	GGC151BLS	Grille Guard	--	Yes	No	Yes	Yes
		11 - 14	--	BTC111BLR	Bullnose Front Bumper	--	No	No	Yes	Yes
		11 - 14	--	FBC111BLR	Front Bumper with Grille Guard	--	No	No	Yes	Yes
		11 - 14	--	GGC111BL1	Grille Guard	--	No	No	Yes	Yes
		11 - 14	11, 13, 14	BBC110BLSL	Rear Bumper	Yes	Yes	--	--	--
		07 - 10	--	FBC081BLR	Front Bumper with Grille Guard	--	No	No	Yes	Yes
		07 - 10	--	GGC081BL1	Grille Guard	--	No	No	Yes	Yes
		03 - 06	--	BTC031BLR	Bullnose Front Bumper	--	No	No	Yes	Yes
		03 - 06	--	FBC031BLR	Front Bumper with Grille Guard	--	No	No	Yes	Yes
		03 - 06	--	GGC031BL1	Grille Guard	--	No	No	Yes	Yes
		01 - 06	11, 13, 14	BBC010BLL	Rear Bumper	Yes	No	--	--	--
01 - 02	--	FBC011BLR	Front Bumper with Grille Guard	--	No	No	No	No		
01 - 02	--	GGC011BL1	Grille Guard	--	No	No	Yes	Yes		
Silverado 2500 HD Classic	--	07 - 07	--	BTC031BLR	Bullnose Front Bumper	--	No	No	Yes	Yes
		07 - 07	--	FBC031BLR	Front Bumper with Grille Guard	--	No	No	Yes	Yes
		07 - 07	--	GGC031BL1	Grille Guard	--	No	No	Yes	Yes
		07 - 07	11, 13, 14	BBC010BLL	Rear Bumper	Yes	No	--	--	--

1. Use PSC19HBL1 for sensor accom.
2. Use PSC16HBL1 for sensor accom.
3. Use PSG19HBL1 for sensor accom.
4. Sport, Express, and Tradesman may require bumper trimming
5. Add'l GGF114BP bolt pack required
6. May trigger parking sensor on Denali

7. Denali requires grille trimming
8. Incl. knock out for engine block heater plug
9. Use PSF19MBP for sensor accommodation
10. Tow rating of 5,000 / 500 lbs.
11. Tow rating of 10,000 / 1,000 lbs.

12. Skirt length 8"
13. Skirt length 10"
14. Retains fact. rec.
15. Does not retain factory receiver
16. Must use PSC22HBL1 for sensor accommodation

17. May require use of PSF231BL1 for sensor accommodation

Applications continued on the following page

Legend Series Bumpers & Grille Guards

Make / Model	Style	Years	Footnote	Part #	Product Description	Lights	Retains			
							Park Sens	Frnt Cam	Tow Hks	Fog Lts
Chevrolet (continued)										
Silverado 3500	--	03 - 06	--	BTC031BLR	Bullnose Front Bumper	--	No	No	Yes	Yes
		03 - 06	--	FBC031BLR	Front Bumper with Grille Guard	--	No	No	Yes	Yes
		03 - 06	--	GGC031BL1	Grille Guard	--	No	No	Yes	Yes
		01 - 06	11, 13, 14	BBC010BLL	Rear Bumper	Yes	No	--	--	--
		01 - 02	--	FBC011BLR	Front Bumper with Grille Guard	--	No	No	No	No
		01 - 02	--	GGC011BL1	Grille Guard	--	No	No	Yes	Yes
Silverado 3500 Classic	--	07 - 07	--	BTC031BLR	Bullnose Front Bumper	--	No	No	Yes	Yes
		07 - 07	--	FBC031BLR	Front Bumper with Grille Guard	--	No	No	Yes	Yes
		07 - 07	--	GGC031BL1	Grille Guard	--	No	No	Yes	Yes
		07 - 07	11, 13, 14	BBC010BLL	Rear Bumper	Yes	No	--	--	--
Silverado 3500 HD	--	24 - 24	--	FBC241BLR	Front Bumper with Grille Guard	--	Yes	Yes	Yes	Yes
		24 - 24	--	GGC241BL1	Grille Guard	--	Yes	Yes	Yes	Yes
		20 - 23	--	BTC201BLR	Bullnose Front Bumper	--	Yes	Yes	Yes	Yes
		20 - 23	--	FBC201BLR	Front Bumper with Grille Guard	--	Yes	No	Yes	Yes
		20 - 23	3	GGC201BL1C	Grille Guard	--	No	Yes	Yes	Yes
		20 - 23	3	GGC201BL1	Grille Guard	--	No	No	Yes	Yes
		15 - 19	--	BTC151BLR	Bullnose Front Bumper	--	Yes	No	Yes	Yes
		15 - 19	--	FBC151BLR	Front Bumper with Grille Guard	--	Yes	No	Yes	Yes
		15 - 19	--	GGC151BL1	Grille Guard	--	No	No	Yes	Yes
		15 - 19	--	GGC151BLS	Grille Guard	--	Yes	No	Yes	Yes
		11 - 14	--	BTC111BLR	Bullnose Front Bumper	--	No	No	Yes	Yes
		11 - 14	--	FBC111BLR	Front Bumper with Grille Guard	--	No	No	Yes	Yes
		11 - 14	--	GGC111BL1	Grille Guard	--	No	No	Yes	Yes
		11 - 14	11, 13, 14	BBC110BLSL	Rear Bumper	Yes	Yes	--	--	--
		07 - 10	--	FBC081BLR	Front Bumper with Grille Guard	--	No	No	Yes	Yes
07 - 10	--	GGC081BL1	Grille Guard	--	No	No	Yes	Yes		
Suburban	--	21 - 24	1	GGC21SBL1C	Grille Guard	--	No	Yes	Yes	Yes
		21 - 24	1	GGC21SBL1	Grille Guard	--	No	No	Yes	Yes
	Excl. Z71	15 - 20	--	GGC15HBL1	Grille Guard	--	No	No	Yes	Yes
	--	07 - 14	--	GGC07HBL1	Grille Guard	--	No	No	Yes	Yes
		00 - 06	--	GGC99HBL1	Grille Guard	--	No	No	Yes	Yes
	--	00 - 06	11, 12, 14	BBC008BLS	Rear Bumper	No	No	--	--	--
		92 - 99	--	FBC881BLR	Front Bumper with Grille Guard	--	No	No	Yes	No
	92 - 99	--	GGC881BL1	Grille Guard	--	No	No	Yes	Yes	

1. Use PSC19HBL1 for sensor accom.
2. Use PSC16HBL1 for sensor accom.
3. Use PSG19HBL1 for sensor accom.
4. Sport, Express, and Tradesman may require bumper trimming
5. Add'l GGF114BP bolt pack required
6. May trigger parking sensor on Denali

7. Denali requires grille trimming
8. Incl. knock out for engine block heater plug
9. Use PSF19MBP for sensor accommodation
10. Tow rating of 5,000 / 500 lbs.
11. Tow rating of 10,000 / 1,000 lbs.

12. Skirt length 8"
13. Skirt length 10"
14. Retains fact. rec.
15. Does not retain factory receiver
16. Must use PSC22HBL1 for sensor accommodation

17. May require use of PSF231BL1 for sensor accommodation

Applications continued on the following page

Legend Series Bumpers & Grille Guards

Make / Model	Style	Years	Footnote	Part #	Product Description	Lights	Retains				
							Park Sens	Frnt Cam	Tow Hks	Fog Lts	
Chevrolet (continued)											
Suburban 2500	--	00 - 06	11, 12, 14	BBC008BLS	Rear Bumper	No	No	--	--	--	
Tahoe	--	21 - 24	--	GGC21SBL1C	Grille Guard	--	Yes	Yes	Yes	Yes	
		21 - 24	--	GGC21SBL1	Grille Guard	--	Yes	No	Yes	Yes	
	Excl. Z71	15 - 20	--	GGC15HBL1	Grille Guard	--	No	No	Yes	Yes	
	--	07 - 14	--	GGC07HBL1	Grille Guard	--	No	No	Yes	Yes	
		00 - 06	--	GGC99HBL1	Grille Guard	--	No	No	Yes	Yes	
		00 - 06	11, 12, 14	BBC008BLS	Rear Bumper	No	No	--	--	--	
		92 - 99	--	FBC881BLR	Front Bumper with Grille Guard	--	No	No	Yes	No	
		92 - 99	--	GGC881BL1	Grille Guard	--	No	No	Yes	Yes	
Dodge											
Ram 1500	--	09 - 10	4	GGD09HBL1	Grille Guard	--	No	No	Yes	Yes	
		Mega Cab	06 - 08	--	BTD061BLR	Bullnose Front Bumper	--	No	No	Yes	Yes
			06 - 08	--	FBD061BLR	Front Bumper with Grille Guard	--	No	No	Yes	Yes
			06 - 08	--	GGD061BL1	Grille Guard	--	No	No	Yes	Yes
	--	06 - 08	11, 13, 15	BBD030BLL	Rear Bumper	Yes	No	--	--	--	
		94 - 01	11, 12, 14	BBD948BLS	Rear Bumper	No	No	--	--	--	
		Excl. Sport	94 - 01	--	BTD941BLR	Bullnose Front Bumper	--	No	No	No	No
			94 - 01	--	FBD941BLR	Front Bumper with Grille Guard	--	No	No	No	No
Ram 2500 / 3500	--	10 - 10	11, 13, 15	BBD100BLL	Rear Bumper	Yes	No	--	--	--	
		10 - 10	11, 13, 15	BBD100BLSS	Rear Bumper	No	Yes	--	--	--	
		10 - 10	--	BTD101BLRS	Bullnose Front Bumper	--	Yes	No	Yes	Yes	
		10 - 10	--	FBD101BLRS	Front Bumper with Grille Guard	--	Yes	No	Yes	Yes	
		10 - 10	--	GGD101BL1	Grille Guard	--	No	No	Yes	Yes	
		06 - 09	--	BTD061BLR	Bullnose Front Bumper	--	No	No	Yes	Yes	
		06 - 09	--	FBD061BLR	Front Bumper with Grille Guard	--	No	No	Yes	Yes	
		03 - 09	11, 13, 15	BBD030BLL	Rear Bumper	Yes	No	--	--	--	
		03 - 09	--	GGD061BL1	Grille Guard	--	No	No	Yes	Yes	
		03 - 05	--	BTD031BLR	Bullnose Front Bumper	--	No	No	Yes	Yes	
		03 - 05	--	FBD031BLR	Front Bumper with Grille Guard	--	No	No	Yes	Yes	
		94 - 02	--	BTD941BLR	Bullnose Front Bumper	--	No	No	No	No	
		94 - 02	--	FBD941BLR	Front Bumper with Grille Guard	--	No	No	No	No	
		94 - 02	11, 12, 14	BBD948BLS	Rear Bumper	No	No	--	--	--	
		94 - 02	--	GGD941BL1	Grille Guard	--	No	No	No	Yes	

1. Use PSC19HBL1 for sensor accom.
2. Use PSC16HBL1 for sensor accom.
3. Use PSG19HBL1 for sensor accom.
4. Sport, Express, and Tradesman may require bumper trimming
5. Add'l GGF114BP bolt pack required
6. May trigger parking sensor on Denali

7. Denali requires grille trimming
8. Incl. knock out for engine block heater plug
9. Use PSF19MBP for sensor accommodation
10. Tow rating of 5,000 / 500 lbs.
11. Tow rating of 10,000 / 1,000 lbs.

12. Skirt length 8"
13. Skirt length 10"
14. Retains fact. rec.
15. Does not retain factory receiver
16. Must use PSC22HBL1 for sensor accommodation

17. May require use of PSF231BL1 for sensor accommodation

Applications continued on the following page

Legend Series Bumpers & Grille Guards

Make / Model	Style	Years	Footnote	Part #	Product Description	Lights	Retains			
							Park Sens	Frnt Cam	Tow Hks	Fog Lts
Dodge (continued)										
Ram 4500 / 550	--	10 - 10	--	BTD101BLRS	Bullnose Front Bumper	--	Yes	No	Yes	Yes
		10 - 10	--	FBD101BLRS	Front Bumper with Grille Guard	--	Yes	No	Yes	Yes
Ford										
Bronco	With square headlights	92 - 96	--	FBF921BLR	Front Bumper with Grille Guard	--	No	No	No	No
Excursion	--	05 - 05	--	FBF051BLR	Front Bumper with Grille Guard	--	No	No	Yes	Yes
		05 - 05	--	GGF051BL1	Grille Guard	--	No	No	Yes	Yes
		00 - 04	--	BTF991BLR	Bullnose Front Bumper	--	No	No	Yes	Yes
		00 - 04	--	FBF991BLR	Front Bumper with Grille Guard	--	No	No	Yes	No
		00 - 04	--	GGF99SBL1	Grille Guard	--	No	No	Yes	Yes
Expedition	--	18 - 24	--	GGF19HBL1C	Grille Guard	--	Yes	Yes	Yes	Yes
		18 - 24	--	GGF19HBL1	Grille Guard	--	Yes	No	Yes	Yes
		07 - 17	--	GGF07HBL1	Grille Guard	--	No	No	Yes	Yes
	4WD	99 - 02	--	GGF994BL1	Grille Guard	--	No	No	Yes	Yes
	--	97 - 02	--	FBF9X1BLR	Front Bumper with Grille Guard	--	No	No	Yes	No
Explorer	Police Interceptor	16 - 19	--	GGF16EBL1	Grille Guard	--	No	No	No	Yes
F-150	--	15 - 25	--	GGF24HBL1	Grille Guard	--	Yes	Yes	Yes	Yes
		09 - 14	--	GGF09HBL1	Grille Guard	--	No	No	Yes	Yes
		04 - 08	--	GGF06HBL1	Grille Guard	--	No	No	Yes	Yes
	4WD	99 - 03	--	GGF994BL1	Grille Guard	--	No	No	Yes	Yes
	With oval headlights	97 - 03	--	FBF9X1BLR	Front Bumper with Grille Guard	--	No	No	Yes	No
	With square headlights	92 - 96	--	FBF921BLR	Front Bumper with Grille Guard	--	No	No	No	No
	--	81 - 96	10, 12, 14	BBF928BLS	Rear Bumper	No	No	--	--	--
F-150 Heritage	--	04 - 04	--	FBF9X1BLR	Front Bumper with Grille Guard	--	No	No	Yes	No
	4WD	04 - 04	--	GGF994BL1	Grille Guard	--	No	No	Yes	Yes
F-250	4WD	99 - 03	--	GGF994BL1	Grille Guard	--	No	No	Yes	Yes
	With oval headlights	97 - 99	--	FBF9X1BLR	Front Bumper with Grille Guard	--	No	No	Yes	No
	With square headlights	92 - 96	--	FBF921BLR	Front Bumper with Grille Guard	--	No	No	No	No
	--	81 - 96	10, 12, 14	BBF928BLS	Rear Bumper	No	No	--	--	--

1. Use PSC19HBL1 for sensor accom.
2. Use PSC16HBL1 for sensor accom.
3. Use PSG19HBL1 for sensor accom.
4. Sport, Express, and Tradesman may require bumper trimming
5. Add'l GGF114BP bolt pack required
6. May trigger parking sensor on Denali

7. Denali requires grille trimming
8. Incl. knock out for engine block heater plug
9. Use PSF19MBP for sensor accommodation
10. Tow rating of 5,000 / 500 lbs.
11. Tow rating of 10,000 / 1,000 lbs.

12. Skirt length 8"
13. Skirt length 10"
14. Retains fact. rec.
15. Does not retain factory receiver
16. Must use PSC22HBL1 for sensor accommodation

17. May require use of PSF231BL1 for sensor accommodation

Applications continued on the following page

Legend Series Bumpers & Grille Guards

Make / Model	Style	Years	Footnote	Part #	Product Description	Lights	Retains				
							Park Sens	Frnt Cam	Tow Hks	Fog Lts	
Ford (continued)											
F-250 Super Duty	--	23 - 24	--	BTF231BLR	Bullnose Front Bumper	--	Yes	Yes	No	Yes	
		23 - 24	16	GGF231BL1	Grille Guard	--	No	Yes	Yes	Yes	
		23 - 24		FBF231BLR	Front Bumper with Grille Guard	--	Yes	Yes	No	Yes	
		17 - 24	12, 14	BBF231BLSS	Rear Bumper	No	Yes	--	--	--	
		17 - 22	--	BTF201BLR	Bullnose Front Bumper	--	--	Yes	Yes	Yes	
		17 - 22	--	FBF201BLRC	Front Bumper with Grille Guard	--	--	Yes	Yes	Yes	
		17 - 22	--	FBF201BLR	Front Bumper with Grille Guard	--	--	No	Yes	Yes	
		Excl. Tremor package with winch	17 - 22	--	GGF201BL1C	Grille Guard	--	--	Yes	Yes	Yes
			17 - 22	--	GGF201BL1	Grille Guard	--	--	No	Yes	Yes
		--	11 - 16	--	BTF111BLR	Bullnose Front Bumper	--	Yes	No	Yes	Yes
			11 - 16	--	FBF111BLR	Front Bumper with Grille Guard	--	--	No	Yes	Yes
			11 - 16	--	GGF111BL1	Grille Guard	--	--	No	Yes	Yes
			08 - 15	11, 13, 14	BBF080BLSL	Rear Bumper	Yes	Yes	--	--	--
	08 - 10		--	FBF081BLR	Front Bumper with Grille Guard	--	--	No	Yes	Yes	
	08 - 10		--	GGF081BL1	Grille Guard	--	--	No	Yes	Yes	
	05 - 07		--	FBF051BLR	Front Bumper with Grille Guard	--	--	No	Yes	Yes	
	05 - 07		--	GGF051BL1	Grille Guard	--	--	No	Yes	Yes	
	99 - 07		11, 13, 14	BBF050BLL	Rear Bumper	Yes	No	--	--	--	
	99 - 04		--	GGF99SBL1	Grille Guard	--	--	No	Yes	Yes	
	--	99 - 04	--	BTF991BLR	Bullnose Front Bumper	--	--	No	Yes	Yes	
99 - 04		--	FBF991BLR	Front Bumper with Grille Guard	--	--	No	Yes	Yes		

F-350	--	81 - 97	10, 12, 14	BBF928BLS	Rear Bumper	No	No	--	--	--
	With square headlights	92 - 97	--	FBF921BLR	Front Bumper with Grille Guard	--	No	No	No	No

F-350 Super Duty (continued on the following page)	--	23 - 24	--	BTF231BLR	Bullnose Front Bumper	--	Yes	Yes	No	Yes
		23 - 24	16	GGF231BL1	Grille Guard	--	No	Yes	Yes	Yes
		23 - 24	--	FBF231BLR	Front Bumper with Grille Guard	--	Yes	Yes	No	Yes
		17 - 24	12, 14	BBF231BLSS	Rear Bumper	No	Yes	--	--	--
		17 - 22	--	BTF201BLR	Bullnose Front Bumper	--	--	Yes	Yes	Yes
		17 - 22	--	FBF201BLRC	Front Bumper with Grille Guard	--	--	Yes	Yes	Yes
		17 - 22	--	FBF201BLR	Front Bumper with Grille Guard	--	--	No	Yes	Yes
	Excl. Tremor package with winch	17 - 22	--	GGF201BL1C	Grille Guard	--	--	Yes	Yes	Yes
		17 - 22	--	GGF201BL1	Grille Guard	--	--	No	Yes	Yes

1. Use PSC19HBL1 for sensor accom.
2. Use PSC16HBL1 for sensor accom.
3. Use PSG19HBL1 for sensor accom.
4. Sport, Express, and Tradesman may require bumper trimming
5. Add'l GGF114BP bolt pack required
6. May trigger parking sensor on Denali

7. Denali requires grille trimming
8. Incl. knock out for engine block heater plug
9. Use PSF19MBP for sensor accommodation
10. Tow rating of 5,000 / 500 lbs.
11. Tow rating of 10,000 / 1,000 lbs.

12. Skirt length 8"
13. Skirt length 10"
14. Retains fact. rec.
15. Does not retain factory receiver
16. Must use PSC22HBL1 for sensor accommodation

17. May require use of PSF231BL1 for sensor accommodation

Applications continued on the following page

Legend Series Bumpers & Grille Guards

Make / Model	Style	Years	Footnote	Part #	Product Description	Lights	Retains			
							Park Sens	Frnt Cam	Tow Hks	Fog Lts
Ford (continued)										
F-350 Super Duty (continued from previous page)	--	11 - 16	--	BTF111BLR	Bullnose Front Bumper	--	Yes	No	Yes	Yes
		11 - 16	--	FBF111BLR	Front Bumper with Grille Guard	--	--	No	Yes	Yes
		11 - 16	--	GGF111BL1	Grille Guard	--	--	No	Yes	Yes
		08 - 15	11, 13, 14	BBF080BLSL	Rear Bumper	Yes	Yes	--	--	--
		08 - 10	--	FBF081BLR	Front Bumper with Grille Guard	--	--	No	Yes	Yes
		08 - 10	--	GGF081BL1	Grille Guard	--	--	No	Yes	Yes
		05 - 07	--	FBF051BLR	Front Bumper with Grille Guard	--	--	No	Yes	Yes
		05 - 07	--	GGF051BL1	Grille Guard	--	--	No	Yes	Yes
		99 - 07	11, 13, 14	BBF050BLL	Rear Bumper	Yes	No	--	--	--
		99 - 04	--	GGF99SBL1	Grille Guard	--	--	No	Yes	Yes
		99 - 04	--	BTF991BLR	Bullnose Front Bumper	--	--	No	Yes	Yes
		99 - 04	--	FBF991BLR	Front Bumper with Grille Guard	--	--	No	Yes	Yes
F-450 Super Duty	--	23 - 24	--	BTF231BLR	Bullnose Front Bumper	--	Yes	Yes	No	Yes
		23 - 24	16	GGF231BL1	Grille Guard	--	No	Yes	Yes	Yes
		23 - 24	--	FBF231BLR	Front Bumper with Grille Guard	--	Yes	Yes	No	Yes
		17 - 24	11, 12, 14	BBF231BLSS	Rear Bumper	No	Yes	--	--	--
		11 - 16	--	BTF111BLR	Bullnose Front Bumper	--	--	No	Yes	Yes
		11 - 16	--	FBF111BLR	Front Bumper with Grille Guard	--	--	No	Yes	Yes
		11 - 16	5	GGF111BL1	Grille Guard	--	--	No	Yes	Yes
		08 - 10	--	FBF081BLR	Front Bumper with Grille Guard	--	--	No	Yes	Yes
		08 - 10	--	GGF081BL1	Grille Guard	--	--	No	Yes	Yes
		05 - 07	--	FBF051BLR	Front Bumper with Grille Guard	--	--	No	Yes	Yes
		05 - 07	--	GGF051BL1	Grille Guard	--	--	No	Yes	Yes
		99 - 04	--	GGF99SBL1	Grille Guard	--	--	No	Yes	Yes
		99 - 04	--	BTF991BLR	Bullnose Front Bumper	--	--	No	Yes	Yes
		99 - 04	--	FBF991BLR	Front Bumper with Grille Guard	--	--	No	Yes	Yes
F-550 Super Duty (continued on the following page)	--	23 - 24	--	BTF231BLR	Bullnose Front Bumper	--	Yes	Yes	No	Yes
		23 - 24	16	GGF231BL1	Grille Guard	--	No	Yes	Yes	Yes
		23 - 24	--	FBF231BLR	Front Bumper with Grille Guard	--	Yes	Yes	No	Yes
		11 - 16	--	BTF111BLR	Bullnose Front Bumper	--	--	No	Yes	Yes
		11 - 16	--	FBF111BLR	Front Bumper with Grille Guard	--	--	No	Yes	Yes
		11 - 16	5	GGF111BL1	Grille Guard	--	--	No	Yes	Yes

1. Use PSC19HBL1 for sensor accom.
2. Use PSC16HBL1 for sensor accom.
3. Use PSG19HBL1 for sensor accom.
4. Sport, Express, and Tradesman may require bumper trimming
5. Add'l GGF114BP bolt pack required
6. May trigger parking sensor on Denali

7. Denali requires grille trimming
8. Incl. knock out for engine block heater plug
9. Use PSF19MBP for sensor accommodation
10. Tow rating of 5,000 / 500 lbs.
11. Tow rating of 10,000 / 1,000 lbs.

12. Skirt length 8"
13. Skirt length 10"
14. Retains fact. rec.
15. Does not retain factory receiver
16. Must use PSC22HBL1 for sensor accommodation

17. May require use of PSF231BL1 for sensor accommodation

Applications continued on the following page

Legend Series Bumpers & Grille Guards

Make / Model	Style	Years	Footnote	Part #	Product Description	Lights	Retains			
							Park Sens	Frnt Cam	Tow Hks	Fog Lts
Ford (continued)										
F-550 Super Duty (continued from previous page)	--	08 - 10	--	FBF081BLR	Front Bumper with Grille Guard	--	--	No	Yes	Yes
		08 - 10	--	GGF081BL1	Grille Guard	--	--	No	Yes	Yes
		05 - 07	--	FBF051BLR	Front Bumper with Grille Guard	--	--	No	Yes	Yes
		05 - 07	--	GGF051BL1	Grille Guard	--	--	No	Yes	Yes
		99 - 04	--	GGF99SBL1	Grille Guard	--	--	No	Yes	Yes
		99 - 04	--	BTF991BLR	Bullnose Front Bumper	--	--	No	Yes	Yes
		99 - 04	--	FBF991BLR	Front Bumper with Grille Guard	--	--	No	Yes	Yes
Ranger	--	24 - 24	--	GGF24MBL1	Grille Guard	--	Yes	Yes	Yes	Yes
		19 - 23	9	GGF19MBL1	Grille Guard	--	No	--	Yes	Yes
GMC										
Canyon	--	23 - 24	17	GGG23MBL1	Grille Guard	--	Yes	Yes	No	Yes
C/K 1500	--	88 - 99	--	GGC881BL1	Grille Guard	--	No	No	Yes	Yes
		88 - 99	--	FBC881BLR	Front Bumper with Grille Guard	--	No	No	Yes	No
C/K 2500 / 3500	--	88 - 00	--	GGC881BL1	Grille Guard	--	No	No	Yes	Yes
		88 - 00	--	FBC881BLR	Front Bumper with Grille Guard	--	No	No	Yes	No
Jimmy	--	92 - 99	--	GGC881BL1	Grille Guard	--	No	No	Yes	Yes
		92 - 99	--	FBC881BLR	Front Bumper with Grille Guard	--	No	No	Yes	No
Sierra 1500	Excl. AT4X	22 - 25	10	GGG22HBL1	Grille Guard	--	Yes	Yes	Yes	Yes
	--	19 - 21	3	GGG19HBL1C	Grille Guard	--	No	Yes	Yes	Yes
		19 - 21	3	GGG19HBL1	Grille Guard	--	No	No	Yes	Yes
		16 - 18	2	GGG16HBL1	Grille Guard	--	No	No	Yes	Yes
		14 - 15	--	GGG14HBL1	Grille Guard	--	No	No	Yes	Yes
		07 - 13	7	GGG08HBL1	Grille Guard	--	No	No	Yes	Yes
		03 - 06	--	GGG03HBL1	Grille Guard	--	No	No	Yes	Yes
		99 - 06	11, 12, 14	BBC998BLS	Rear Bumper	No	No	--	--	--
Sierra 1500 Classic	--	07 - 07	--	GGG03HBL1	Grille Guard	--	No	No	Yes	Yes
		07 - 07	11, 12, 14	BBC998BLS	Rear Bumper	No	No	--	--	--
Sierra 1500 HD	--	01 - 06	11, 12, 14	BBC998BLS	Rear Bumper	No	No	--	--	--
Sierra 1500 HD Classic	--	07 - 07	11, 12, 14	BBC998BLS	Rear Bumper	No	No	--	--	--
Sierra 1500 Limited	--	22 - 22	3	GGG19HBL1C	Grille Guard	--	No	Yes	Yes	Yes
		22 - 22	3	GGG19HBL1	Grille Guard	--	No	No	Yes	Yes
		19 - 19	2	GGG16HBL1	Grille Guard	--	No	No	Yes	Yes
Sierra 2500	Excl. 2500HD	99 - 04	11, 12, 14	BBC998BLS	Rear Bumper	No	No	--	--	--

1. Use PSC19HBL1 for sensor accom.
2. Use PSC16HBL1 for sensor accom.
3. Use PSG19HBL1 for sensor accom.
4. Sport, Express, and Tradesman may require bumper trimming
5. Add'l GGF114BP bolt pack required
6. May trigger parking sensor on Denali

7. Denali requires grille trimming
8. Incl. knock out for engine block heater plug
9. Use PSF19MBP for sensor accommodation
10. Tow rating of 5,000 / 500 lbs.
11. Tow rating of 10,000 / 1,000 lbs.

12. Skirt length 8"
13. Skirt length 10"
14. Retains fact. rec.
15. Does not retain factory receiver
16. Must use PSC22HBL1 for sensor accommodation

17. May require use of PSF231BL1 for sensor accommodation

Applications continued on the following page

Legend Series Bumpers & Grille Guards

Make / Model	Style	Years	Footnote	Part #	Product Description	Lights	Retains			
							Park Sens	Frnt Cam	Tow Hks	Fog Lts
GMC (continued)										
Sierra 2500 HD	--	24 - 24	--	FBG241BLR	Front Bumper with Grille Guard	--	Yes	Yes	Yes	Yes
		20 - 24	3	GGG241BL1	Grille Guard	--	Yes	Yes	Yes	Yes
		20 - 23	--	FBG201BLRC	Front Bumper with Grille Guard	--	Yes	Yes	Yes	Yes
		20 - 23	--	FBG201BLR	Front Bumper with Grille Guard	--	Yes	No	Yes	Yes
		15 - 19	--	GGG151BL1	Grille Guard	--	No	No	Yes	Yes
		15 - 19	6	GGG151BLS	Grille Guard	--	Yes	No	Yes	Yes
		15 - 19	--	FBG151BLR	Front Bumper with Grille Guard	--	Yes	No	Yes	Yes
		11 - 14	7	GGG111BL1	Grille Guard	--	No	No	Yes	Yes
		11 - 14	--	FBG111BLR	Front Bumper with Grille Guard	--	No	No	Yes	Yes
		11 - 14	11, 13, 14	BBC110BLSL	Rear Bumper	Yes	Yes	--	--	--
		07 - 10	7	GGG081BL1	Grille Guard	--	No	No	Yes	Yes
		07 - 10	--	FBG081BLR	Front Bumper with Grille Guard	--	No	No	Yes	Yes
		03 - 06	--	GGG031BL1	Grille Guard	--	No	No	Yes	Yes
		03 - 06	--	FBG031BLR	Front Bumper with Grille Guard	--	No	No	Yes	Yes
		01 - 02	--	GGC011BL1	Grille Guard	--	No	No	Yes	Yes
01 - 06	11, 13, 14	BBC010BLL	Rear Bumper	Yes	No	--	--	--		
Sierra 2500 HD Classic	--	07 - 07	--	FBG031BLR	Front Bumper with Grille Guard	--	No	No	Yes	Yes
		07 - 07	--	GGG031BL1	Grille Guard	--	No	No	Yes	Yes
		07 - 07	11, 13, 14	BBC010BLL	Rear Bumper	Yes	No	--	--	--
Sierra 3500	--	03 - 06	--	FBG031BLR	Front Bumper with Grille Guard	--	No	No	Yes	Yes
		03 - 06	--	GGG031BL1	Grille Guard	--	No	No	Yes	Yes
		01 - 02	--	GGC011BL1	Grille Guard	--	No	No	Yes	Yes
Sierra 3500 Classic	--	07 - 07	--	GGG031BL1	Grille Guard	--	No	No	Yes	Yes
		07 - 07	--	FBG031BLR	Front Bumper with Grille Guard	--	No	No	Yes	Yes
Sierra 3500 HD (continued on the following page)	--	24 - 24	--	FBG241BLR	Front Bumper with Grille Guard	--	Yes	Yes	Yes	Yes
		20 - 24	3	GGG241BL1	Grille Guard	--	Yes	Yes	Yes	Yes
		20 - 23	--	FBG201BLRC	Front Bumper with Grille Guard	--	Yes	Yes	Yes	Yes
		20 - 23	--	FBG201BLR	Front Bumper with Grille Guard	--	Yes	No	Yes	Yes
		15 - 19	--	GGG151BL1	Grille Guard	--	No	No	Yes	Yes
		15 - 19	6	GGG151BLS	Grille Guard	--	Yes	No	Yes	Yes
		15 - 19	--	FBG151BLR	Front Bumper with Grille Guard	--	Yes	No	Yes	Yes
		11 - 14	7	GGG111BL1	Grille Guard	--	No	No	Yes	Yes
11 - 14	--	FBG111BLR	Front Bumper with Grille Guard	--	No	No	Yes	Yes		
11 - 14	11, 13, 14	BBC110BLSL	Rear Bumper	Yes	Yes	--	--	--		

1. Use PSC19HBL1 for sensor accom.
2. Use PSC16HBL1 for sensor accom.
3. Use PSG19HBL1 for sensor accom.
4. Sport, Express, and Tradesman may require bumper trimming
5. Add'l GGF114BP bolt pack required
6. May trigger parking sensor on Denali

7. Denali requires grille trimming
8. Incl. knock out for engine block heater plug
9. Use PSF19MBP for sensor accommodation
10. Tow rating of 5,000 / 500 lbs.
11. Tow rating of 10,000 / 1,000 lbs.

12. Skirt length 8"
13. Skirt length 10"
14. Retains fact. rec.
15. Does not retain factory receiver
16. Must use PSC22HBL1 for sensor accommodation

17. May require use of PSF231BL1 for sensor accommodation

Applications continued on the following page

Legend Series Bumpers & Grille Guards

Make / Model	Style	Years	Footnote	Part #	Product Description	Lights	Retains			
							Park Sens	Frnt Cam	Tow Hks	Fog Lts
GMC (continued)										
Sierra 3500 HD (continued from previous page)	--	07 - 10	7	GGG081BL1	Grille Guard	--	No	No	Yes	Yes
		07 - 10	--	FBG081BLR	Front Bumper with Grille Guard	--	No	No	Yes	Yes
Suburban	--	92 - 99	--	FBC881BLR	Front Bumper with Grille Guard	--	No	No	Yes	No
		92 - 99	--	GGC881BL1	Grille Guard	--	No	No	Yes	Yes
Yukon	--	00 - 06	11, 12, 14	BBC008BLS	Rear Bumper	No	No	--	--	--
		92 - 99	--	FBC881BLR	Front Bumper with Grille Guard	--	No	No	Yes	No
		92 - 99	--	GGC881BL1	Grille Guard	--	No	No	Yes	Yes
Yukon XL	--	00 - 06	11, 12, 14	BBC008BLS	Rear Bumper	No	No	--	--	--
Ram										
1500	Excl. diesel	19 - 24	--	GGD19HBL1C	Grille Guard	--	Yes	Yes	No	Yes
	Excl. Rebel	11 - 18	4	GGD09HBL1	Grille Guard	--	No	No	Yes	Yes
1500 Classic	Excl. Warlock	19 - 24	4	GGD09HBL1	Grille Guard	--	No	No	Yes	Yes
2500 / 3500	--	19 - 24	--	BTD191BLR	Bullnose Front Bumper	Yes	Yes	Yes	Yes	Yes
		19 - 24	--	FBD191BLRC	Front Bumper with Grille Guard	--	Yes	Yes	Yes	Yes
		19 - 24	--	FBD191BLR	Front Bumper with Grille Guard	--	Yes	No	Yes	Yes
		19 - 24	--	GGD191BL1C	Grille Guard	--	Yes	Yes	Yes	Yes
		19 - 24	--	GGD191BL1	Grille Guard	--	Yes	No	Yes	Yes
		11 - 18	11, 13, 15	BBD100BLL	Rear Bumper	Yes	No	--	--	--
	11 - 18	11, 13, 15	BBD100BLSS	Rear Bumper	No	Yes	--	--	--	
	Excl. Tradesman	11 - 18	--	BTD101BLRS	Bullnose Front Bumper	--	Yes	No	Yes	Yes
		11 - 18	--	FBD101BLRS	Front Bumper with Grille Guard	--	Yes	No	Yes	Yes
--	11 - 18	--	GGD101BL1	Grille Guard	--	No	No	Yes	Yes	
4500 / 5500	Excl. Tradesman	11 - 18	--	BTD101BLRS	Bullnose Front Bumper	--	Yes	No	Yes	Yes
		11 - 18	--	FBD101BLRS	Front Bumper with Grille Guard	--	Yes	No	Yes	Yes
Toyota										
Tacoma	--	16 - 23	--	GGT16MBL1	Grille Guard	--	No	No	Yes	Yes
		05 - 15	--	GGT05MBL1	Grille Guard	--	No	No	Yes	Yes
Tundra	--	22 - 24	--	GGT22HBL1	Grille Guard	--	Yes	Yes	No	Yes
		14 - 21	--	GGT14HBL1	Grille Guard	--	No	No	Yes	Yes
		07 - 13	--	GGT07HBL1	Grille Guard	--	No	No	Yes	Yes

1. Use PSC19HBL1 for sensor accom.
2. Use PSC16HBL1 for sensor accom.
3. Use PSG19HBL1 for sensor accom.
4. Sport, Express, and Tradesman may require bumper trimming
5. Add'l GGF114BP bolt pack required
6. May trigger parking sensor on Denali

7. Denali requires grille trimming
8. Incl. knock out for engine block heater plug
9. Use PSF19MBP for sensor accommodation
10. Tow rating of 5,000 / 500 lbs.
11. Tow rating of 10,000 / 1,000 lbs.

12. Skirt length 8"
13. Skirt length 10"
14. Retains fact. rec.
15. Does not retain factory receiver
16. Must use PSC22HBL1 for sensor accommodation

17. May require use of PSF231BL1 for sensor accommodation

3"

LEGEND™ RUNNING STEPS

Product Details

- Durable gloss black powder coat finish
- Co-cured in industry-leading, rust-resistant, liquid A-coat
- 14-gauge 3" top pipe and 1-1/2" loop pipe for enhanced rigidity
- Truck-specific step configuration to match door layout and maximize safety
- 4" wide steps for comfortable entry and exit
- 12-gauge, punched steel foot plates with raised, high-traction treads
- Prominent Ranch Hand cowboy logo cut into each front step
- 3/16" thick brackets with truck-specific mounting points for easy installation
- Available in 4-step and 6-step configurations for easy access into extended cabs and truck beds
- Works with select tonneau covers (confirm fitment before purchase)
- Designed, cut, fabricated, welded, and finished in the USA

See page 40 for application information



Step up into your rig with confidence and style.



Ranch Hand running steps are constructed from 3" tubing and 3/16" thick brackets that secure the steps to the vehicle in the factory location without the need to drill extra holes



Front step plate is cut with the official Ranch Hand logo and features a 12-gauge punched pattern of raised steel treads to promote dependable traction



Steps are 4" wide to provide a spacious platform for comfortable entry and exit. Each set features 1-1/2" loop pipes for enhanced rigidity

Finish & Material

Finish:
A-coat and gloss black powder coat

Material:
Carbon steel



Ram 2500



Scan for current applications
or visit ranchhand.com

LEGEND™ RUNNING STEPS APPLICATION GUIDE

Legend Series Running Steps

Make / Model	Years	Cab Length	Bed Length	Bed Type	Part #	Steps	Step Length
Chevrolet							
Colorado	15 - 24	Crew	--	Standard	RSC15MC1B4S	4-step	Cab length
Canyon	15 - 23	Crew	--	Standard	RSC15MC1B4S	4-step	Cab length
Silverado / Sierra 1500	19 - 25	Crew	--	--	RSC191C1B4S	4-step	Cab length
	19 - 25	Crew	6' 6"	Standard	RSC191C6B6S	6-step	Wheel-to-Wheel
	07 - 18	Crew	--	--	RSC071C1B4S	4-step	Cab length
	07 - 18	Crew	6' 6"	Standard	RSC071C6B6S	6-step	Wheel-to-Wheel
	07 - 18	Extended	6' 6"	Standard	RSC071Q6B6S	6-step	Wheel-to-Wheel
Silverado 1500 LD	19 - 19	Extended	6' 6"	Standard	RSC071Q6B6S	6-step	Wheel-to-Wheel
Silverado 1500 LTD	22 - 22	Crew	--	--	RSC191C1B4S	4-step	Cab length
	22 - 22	Crew	6' 6"	Standard	RSC191C6B6S	6-step	Wheel-to-Wheel
Sierra 1500 Limited	22 - 22	Crew	--	--	RSC191C1B4S	4-step	Cab length
	22 - 22	Crew	6' 6"	Standard	RSC191C6B6S	6-step	Wheel-to-Wheel
	19 - 19	Extended	6' 6"	Standard	RSC071Q6B6S	6-step	Wheel-to-Wheel
Silverado / Sierra 2500 HD	20 - 25	Crew	--	--	RSC191C1B4S	4-step	Cab length
	20 - 25	Crew	6' 5"	Standard	RSC191C6B6S	6-step	Wheel-to-wheel
	07 - 19	Crew	--	--	RSC071C1B4S	4-step	Cab length
	07 - 19	Crew	6' 6"	Standard	RSC071C6B6S	6-step	Wheel-to-wheel
	07 - 19	Crew	8'	Standard	RSC071C8B6S	6-step	Wheel-to-wheel
	07 - 19	Extended	6' 5"	Standard	RSC071Q6B6S	6-step	Wheel-to-wheel
Silverado / Sierra 3500 HD	20 - 25	Crew	--	--	RSC191C1B4S	4-step	Cab length
	20 - 25	Crew	6' 5"	Standard	RSC191C6B6S	6-step	Wheel-to-wheel
	07 - 19	Crew	--	--	RSC071C1B4S	4-step	Cab length
	11 - 19	Crew	6' 5"	Standard	RSC071C6B6S	6-step	Wheel-to-wheel
	07 - 19	Crew	8'	Standard	RSC071C8B6S	6-step	Wheel-to-wheel
	11 - 18	Extended	6' 5"	Standard	RSC071Q6B6S	6-step	Wheel-to-wheel
Dodge							
Ram 1500	09 - 10	Crew	6' 4"	Standard	RSD101C6B6S	6-step	Wheel-to-wheel
	09 - 10	Crew	--	--	RSD091C1B4S	4-step	Cab length
Ram 2500 / 3500	10 - 10	Crew	6' 4"	Standard	RSD101C6B6S	6-step	Wheel-to-wheel
	10 - 10	Crew	8'	Standard	RSD101C8B6S	6-step	Wheel-to-wheel
	09 - 10	Crew	--	--	RSD091C1B4S	4-step	Cab length
	10 - 10	Extended Crew	6' 4"	Standard	RSD101M6B6S	6-step	Wheel-to-wheel

Legend Series Running Steps

Make / Model	Years	Cab Length	Bed Length	Bed Type	Part #	Steps	Step Length
Ford							
F-150	15 - 24	Crew	--	--	RSF151C1B4S	4-step	Cab length
	15 - 24	Crew	6' 6"	Standard	RSF171C6B6S	6-step	Wheel-to-wheel
	15 - 24	Extended	--	--	RSF151S1B4S	4-step	Cab length
	15 - 24	Extended	6' 6"	Standard	RSF151S6B6S	6-step	Wheel-to-wheel
	15 - 24	Extended	8'	Standard	RSF171S8B6S	6-step	Wheel-to-wheel
F-150 Lightning	22 - 24	Crew	--	--	RSF151C1B4S	4-step	Cab length
F-250 Super Duty	17 - 24	Crew	--	--	RSF151C1B4S	4-step	Cab length
	17 - 24	Crew	6' 9"	Standard	RSF171C6B6S	6-step	Wheel-to-wheel
	17 - 24	Crew	8'	Standard	RSF171C8B6S	6-step	Wheel-to-wheel
	99 - 16	Crew	--	--	RSF991C1B4S	4-step	Cab length
	99 - 16	Crew	6' 9"	Standard	RSF991C6B6S	6-step	Wheel-to-wheel
	99 - 16	Crew	8'	Standard	RSF991C8B6S	6-step	Wheel-to-wheel
	17 - 24	Extended	--	--	RSF151S1B4S	4-step	Cab length
	17 - 24	Extended	6' 9"	Standard	RSF151S6B6S	6-step	Wheel-to-wheel
F-350 Super Duty	17 - 24	Crew	--	--	RSF151C1B4S	4-step	Cab length
	17 - 24	Crew	6' 9"	Standard	RSF171C6B6S	6-step	Wheel-to-wheel
	17 - 24	Crew	8'	Standard	RSF171C8B6S	6-step	Wheel-to-wheel
	17 - 24	Crew	8'	Dually	RSF17DC8B6S	6-step	Wheel-to-wheel
	99 - 16	Crew	--	--	RSF991C1B4S	4-step	Cab length
	99 - 16	Crew	6' 9"	Standard	RSF991C6B6S	6-step	Wheel-to-wheel
	99 - 16	Crew	8'	Standard	RSF991C8B6S	6-step	Wheel-to-wheel
	17 - 24	Extended	--	--	RSF151S1B4S	4-step	Cab length
	17 - 24	Extended	6' 5"	Standard	RSF151S6B6S	6-step	Wheel-to-wheel
F-450 Super Duty	17 - 24	Crew	--	--	RSF151C1B4S	4-step	Cab length
	17 - 24	Crew	8'	Dually	RSF17DC8B6S	6-step	Wheel-to-wheel
	99 - 16	Crew	--	--	RSF991C1B4S	4-step	Cab length
Ranger	19 - 24	Crew	--	--	RSF19MC1B4S	4-step	Cab length
Ram							
1500	19 - 25	Crew	--	--	RSD19HC1B4S	4-step	Cab length
	11 - 18	Crew	--	--	RSD091C1B4S	4-step	Cab length
	11 - 18	Crew	6' 4"	Standard	RSD101C6B6S	6-step	Wheel-to-wheel
1500 Classic	19 - 24	Crew	--	--	RSD091C1B4S	4-step	Cab length
	19 - 24	Crew	6' 4"	Standard	RSD101C6B6S	6-step	Wheel-to-wheel
2500 / 3500	11 - 24	Crew	--	--	RSD091C1B4S	4-step	Cab length
	11 - 24	Crew	6' 4"	Standard	RSD101C6B6S	6-step	Wheel-to-wheel
	11 - 24	Crew	8'	Standard	RSD101C8B6S	6-step	Wheel-to-wheel
	11 - 24	Extended Crew	--	--	RSD101M1B4S	4-step	Cab length
	11 - 24	Extended Crew	6' 4"	Standard	RSD101M6B6S	6-step	Wheel-to-wheel
Toyota							
4Runner	10 - 23	--	--	--	RST10MC1B4S	4-step	Cab length
Tacoma	07 - 23	Crew	--	--	RST07MC1B4S	4-step	Cab length
Tundra	22 - 24	Crew	--	--	RST22HC1B4S	4-step	Cab length
	22 - 24	Extended	--	--	RST22HQ1B4S	4-step	Cab length
	07 - 21	Crew	--	--	RST07HC1B4S	4-step	Cab length
	07 - 21	Extended	--	--	RST07HQ1B4S	4-step	Cab length

LEGEND™ HEADACHE RACKS

Product Details

- Made from high-density 11-gauge U.S. steel and manufactured in the USA
- Provides a stable surface for supporting large or long items when hauling
- Louvered steel protects cab and glass from shifting cargo and provides privacy
- Removable center section provides rear window access and improved visibility
- Available in lighted or non-lighted configurations
- Protected with a rust-resistant A-coat and durable, gloss black powder coat finish
- Compatible with standard cross-bed toolboxes up to 21" wide
- Works with select tonneau covers (confirm fitment before purchase)
- Uses existing bed stake pockets with minimal drilling or modification needed
- Bed stake pocket brackets sold separately
- Integrated LED lights and harness included on lighted models (splicing required)
- Brackets available for LED light bars and utility lights (sold separately)



Built for the job site.



With a traditional, time-honored look, the Legend headache rack will distinguish your truck from the flock as a workhorse



Features a prominently placed Ranch Hand cowboy logo, a thick gloss black powder coat finish, and rear louvers which offer privacy and protection



Lighted options available featuring large LED brake and reverse lights for increased safety

Finish & Material

Finish:
A-coat and
gloss black
powder coat

Material:
Carbon steel



Scan for current applications
or visit ranchhand.com



LEGEND™ HEADACHE RACK APPLICATION GUIDE

Legend Series Headache Racks

Make / Model	Years	Style	Bracket #	Headache Rack With Lights #	Headache Rack Without Lights #
Chevrolet / GMC					
Silverado / Sierra 1500	08 - 18	--	HRSBC08H1	HRLWL200	HRLNL200
Silverado / Sierra 1500 LD	19 - 19	--	HRSBC08H1	HRLWL200	HRLNL200
Silverado / Sierra 2500 HD	20 - 25	--	HRSBC201	HRLWL200	HRLNL200
Silverado / Sierra 3500 HD	20 - 25	--	HRSBC201	HRLWL200	HRLNL200
Dodge					
Ram 1500	09 - 10	5.5' bed	HRSBD09H	HRLWL200	HRLNL200
	02 - 10	Excluding 5.5' bed	HRSBD02H1	HRLWL200	HRLNL200
Ram 2500	02 - 10	--	HRSBD02H1	HRLWL200	HRLNL200
Ram 3500	02 - 10	--	HRSBD02H1	HRLWL200	HRLNL200
Ford					
F-150	15 - 24	--	HRSBF15H	HRLWL200	HRLNL200
	04 - 14	--	HRSBF97H	HRLWL200	HRLNL200
	01 - 03	Crew cab, 5.5' bed	HRSBF97H	HRLWL200	HRLNL200
F-250 Super Duty	17 - 24	--	HRSBF171	HRLWL100	HRLNL100
	99 - 16	--	HRSBF991	HRLWL100	HRLNL100
F-350 Super Duty	17 - 24	--	HRSBF171	HRLWL100	HRLNL100
	99 - 16	--	HRSBF991	HRLWL100	HRLNL100
F-450 Super Duty	17 - 24	--	HRSBF171	HRLWL100	HRLNL100
	08 - 16	--	HRSBF991	HRLWL100	HRLNL100
Ram					
1500	19 - 24	--	HRSBD19H	HRLWL200	HRLNL200
	11 - 18	5.5' bed	HRSBD09H	HRLWL200	HRLNL200
	11 - 18	Excluding 5.5' bed	HRSBD02H1	HRLWL200	HRLNL200
1500 Classic	19 - 24	5.5' bed	HRSBD09H	HRLWL200	HRLNL200
	19 - 24	Excluding 5.5' bed	HRSBD02H1	HRLWL200	HRLNL200
2500	11 - 24	--	HRSBD02H1	HRLWL200	HRLNL200
3500	11 - 24	--	HRSBD02H1	HRLWL200	HRLNL200

HEADACHE RACK ACCESSORIES

Electrical Harnesses

- Simple plug-and-play design eliminates the need for cutting or splicing
- Operates lighted Legend headache rack without activating vehicle tow mode
- Safely provides a dependable connection without harming factory wiring system
- Prevents electrical issues such as shorting and grounding
- Easy to use with detailed installation instructions included
- Robust connection provides OEM dependability and is virtually maintenance-free
- **See adjacent page for application information**



RHE-10003



RHE-10004

Universal Light Mounts

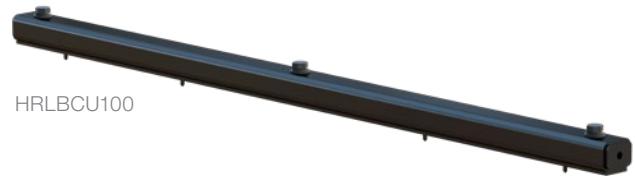
- Easily mount utility lights to the sides or top of Ranch Hand headache racks
- Made from high-density 7-gauge steel
- Finished with a durable, gloss black powder coat finish
- Mounting hardware included
- Drilling required for installation



HRLBS100



HRLBC100



HRLBCU100

Part #	Mount Location	Mounting Surface	Light Style
HRLBS100	Side	6-1/2"	Rotating, strobe, or flood lights
HRLBC100	Center / top	10-1/2"	Utility lights or LED light bars
HRLBCU100	Center / top	46"	Utility lights or LED light bars

Replacement Light Kit & Wiring Harness

- Safely provides a dependable connection and reliable power
- Designed to work with splice-in harness #RHE-10002
- Prevents electrical issues such as shorting and grounding



RHE-10001

Replacement Universal Splice-In Wiring Harness

- Splice-in for wiring headache rack lights to vehicle taillights
- Designed to work with lighting kit #RHE-10001
- Operates lighted Legend headache rack without activating vehicle tow mode



RHE-10002



Scan for current applications
or visit ranchhand.com



ELECTRICAL HARNESS APPLICATION GUIDE

Legend Series Headache Rack Harnesses

Make / Model	Years	Style	Harness #
Chevrolet / GMC			
Silverado / Sierra 1500	08 - 18	--	RHE-10003
Silverado / Sierra 1500 LD	19 - 19	--	RHE-10003
Silverado / Sierra 2500 HD / 3500 HD	24 - 24	--	RHE-10004
	20 - 23	--	RHE-10005
Dodge			
Ram 1500	09 - 10	--	RHE-10003
Ram 2500	10 - 10	--	RHE-10003
Ram 3500	10 - 10	--	RHE-10003
Ford			
F-150	21 - 24	--	RHE-10007
	15 - 20	--	RHE-10006
	01 - 14	--	RHE-10003
F-250 Super Duty	23 - 24	--	RHE-10009
	20 - 22	With LED and rear sensors	RHE-10009
	20 - 22	Without LED and rear sensors	RHE-10008
	17 - 19	--	RHE-10008
	99 - 16	--	RHE-10003
F-350 Super Duty	23 - 24	--	RHE-10009
	20 - 22	With LED and rear sensors	RHE-10009
	20 - 22	Excluding LED and rear sensors	RHE-10008
	17 - 19	--	RHE-10008
	99 - 16	--	RHE-10003
F-450 Super Duty	23 - 24	--	RHE-10009
	20 - 22	With LED and rear sensors	RHE-10009
	20 - 22	Excluding LED and rear sensors	RHE-10008
	17 - 19	--	RHE-10008
	08 - 16	--	RHE-10003
Ram			
1500	11 - 25	--	RHE-10003
1500 Classic	19 - 24	--	RHE-10003
2500 / 3500	11 - 24	--	RHE-10003

SUMMIT™ SERIES





ESCAPE THE CONCRETE JUNGLE.

Made for those who leave city streets behind, the Summit Series combines rugged dependability with a reduced weight and modern look. Always ready for any adventure, the Summit Series will take on any obstacle and keep you protected every step of the way.

SUMMIT™ FRONT BUMPER WITH GRILLE GUARD

Product Details

- High-strength yet lightweight 12-gauge, diamond-plate steel construction
- Constructed with 5/16" uprights for high-tensile strength and durability
- One-piece welded fabrication prevents rattling
- Perforated 12-gauge steel protects the truck grille from brush and road debris
- Retains factory fog lights and tow hooks (if equipped)
- Compatible with front-facing sensors (Options available to accommodate front-facing cameras)
- Tough black powder coat finish for corrosion resistance
- Easy, direct-bolt installation with no cutting, welding, or drilling required

See page 52 for application information



Reduced weight. Robust protection.



The Summit is constructed with high-strength, 12-gauge, diamond-plate steel and has a 5/16" upright thickness that increases durability and sturdiness



The wraparound brush guard is made from 12-gauge steel tubing and provides extra front-end protection to safeguard headlights and body from brush and road debris



Features a strong yet lightweight design which provides robust protection and is specific to the truck make and model for a custom, tailored fit and easy installation

Finish & Material

Finish:
Gloss black powder coat

Material:
Carbon steel



Chevrolet 2500 HD

BUMPER ACCESSORIES

Universal Rubber Upright Pads

- Rubber stripping to protect grille guard uprights and finish
- Constructed from tough black rubber
- Easy, friction-fit installation
- Includes two rubber strips

Part #	Fits
RUPU	Legend grille guard and Legend, Summit, and Sport front bumpers with grille guard



SUMMIT™ BULLNOSE FRONT BUMPER

Product Details

- High-strength yet lightweight 12-gauge, diamond-plate steel construction with 2" thick 12-gauge bullnose
- Constructed with 5/16" uprights for high-tensile strength and durability
- Bullnose brush guard for extra front-end protection and an aggressive look
- Retains factory fog lights and tow hooks (if equipped)
- Tough black powder coat finish for corrosion resistance
- Compatible with front-facing cameras and sensors
- Easy, direct-bolt installation with no cutting, welding, or drilling required

See page 52 for application information



Dependable strength with sporty, Baja style.



The Summit is constructed with high-strength, 12-gauge, diamond-plate steel and has a 5/16" upright thickness that increases durability and sturdiness



The 2" thick, 12-gauge bullnose provides extra front-end protection to safeguard the grille from obstacles and road debris while adding a sporty, baja-style look



Specifically designed for your truck, its direct-bolt-on installation method is straightforward and prevents the need to cut, weld, or drill

Finish & Material



Finish:
Gloss black powder coat

Material:
Carbon steel



GMC Denali HD



Toyota Tundra



Scan for current applications
or visit ranchhand.com



SUMMIT™ SERIES APPLICATION GUIDE

Summit Series Bumpers

Make / Model	Style	Years	FN	Part #	Product Description	Retains				
						Park Sens	Frnt Cam	Tow Hks	Fog Lts	
Chevrolet										
Avalanche 1500	Excluding models with cladding	03 - 06	--	FSC03HBL1	Front Bumper with Grille Guard	No	No	Yes	Yes	
Avalanche 2500	Excluding models with cladding	03 - 06	--	FSC03HBL1	Front Bumper with Grille Guard	No	No	Yes	Yes	
Silverado 1500	--	22 - 25	--	FSC22HBL1	Front Bumper with Grille Guard	Yes	Yes	Yes	Yes	
	Excluding diesel	19 - 21	--	FSC19HBL1C	Front Bumper with Grille Guard	Yes	Yes	Yes	Yes	
	Excluding diesel or fender flares	19 - 21	--	FSC19HBL1	Front Bumper with Grille Guard	Yes	No	Yes	Yes	
	--	--	16 - 18	--	FSC16HBL1	Front Bumper with Grille Guard	Yes	No	Yes	Yes
			16 - 18	--	BSC16HBL1	Bullnose Front Bumper	Yes	No	Yes	Yes
			14 - 15	--	FSC14HBL1	Front Bumper with Grille Guard	Yes	No	Yes	Yes
			14 - 15	--	BSC14HBL1	Bullnose Front Bumper	No	No	Yes	Yes
			07 - 13	--	FSC08HBL1	Front Bumper with Grille Guard	No	No	Yes	Yes
			03 - 06	--	FSC03HBL1	Front Bumper with Grille Guard	No	No	Yes	Yes
Excluding Z71	99 - 02	--	FSC99HBL1	Front Bumper with Grille Guard	No	No	Yes	Yes		
Silverado 1500 Classic	--	07 - 07	--	FSC03HBL1	Front Bumper with Grille Guard	No	No	Yes	Yes	
Silverado 1500 LD	--	19 - 19	--	FSC16HBL1	Front Bumper with Grille Guard	Yes	No	Yes	Yes	
		19 - 19	--	BSC16HBL1	Bullnose Front Bumper	Yes	No	Yes	Yes	
Silverado 1500 LTD	Excluding diesel	22 - 22	--	FSC19HBL1C	Front Bumper with Grille Guard	Yes	Yes	Yes	Yes	
	Excluding diesel or fender flares	22 - 22	--	FSC19HBL1	Front Bumper with Grille Guard	Yes	No	Yes	Yes	
Silverado 2500 HD	--	20 - 23	--	FSC201BL1C*	Front Bumper with Grille Guard	Yes	Yes	Yes	Yes	
		20 - 23	--	FSC201BL1	Front Bumper with Grille Guard	Yes	No	Yes	Yes	
		15 - 19	--	FSC151BL1	Front Bumper with Grille Guard	Yes	No	Yes	Yes	
		15 - 19	--	BSC151BL1	Bullnose Front Bumper	Yes	No	Yes	Yes	
		11 - 14	--	FSC111BL1	Front Bumper with Grille Guard	No	No	Yes	Yes	
		07 - 10	--	FSC081BL1	Front Bumper with Grille Guard	No	No	Yes	Yes	
		03 - 06	--	FSC031BL1	Front Bumper with Grille Guard	No	No	Yes	Yes	

1. Includes knock out for engine block heater plug
2. Requires cutting of the plastic bumper

3. Will lose functionality of motorized air dam
- * Continued while supplies last

Applications continued on the following page

Summit Series Bumpers

Make / Model	Style	Years	FN	Part #	Product Description	Retains			
						Park Sens	Frnt Cam	Tow Hks	Fog Lts
Chevrolet (continued)									
Silverado 2500 HD Classic	--	07 - 07	--	FSC031BL1	Front Bumper with Grille Guard	No	No	Yes	Yes
Silverado 3500	--	03 - 06	--	FSC031BL1	Front Bumper with Grille Guard	No	No	Yes	Yes
Silverado 3500 Classic	--	07 - 07	--	FSC031BL1	Front Bumper with Grille Guard	No	No	Yes	Yes
Silverado 3500 HD	--	20 - 23	--	FSC201BL1C*	Front Bumper with Grille Guard	Yes	Yes	Yes	Yes
		20 - 23	--	FSC201BL1	Front Bumper with Grille Guard	Yes	No	Yes	Yes
		15 - 19	--	FSC151BL1	Front Bumper with Grille Guard	Yes	No	Yes	Yes
		15 - 19	--	BSC151BL1	Bullnose Front Bumper	Yes	No	Yes	Yes
		11 - 14	--	FSC111BL1	Front Bumper with Grille Guard	No	No	Yes	Yes
		07 - 10	--	FSC081BL1	Front Bumper with Grille Guard	No	No	Yes	Yes
Suburban	--	00 - 06	--	FSC99HBL1	Front Bumper with Grille Guard	No	No	Yes	Yes
Tahoe	--	00 - 06	--	FSC99HBL1	Front Bumper with Grille Guard	No	No	Yes	Yes
Dodge									
Ram 1500	--	06 - 09	--	FSD061BL1	Front Bumper with Grille Guard	No	No	Yes	Yes
Ram 2500	--	10 - 10	--	FSD101BL1S	Front Bumper with Grille Guard	Yes	No	Yes	Yes
	Excluding Express and Sport	10 - 10	--	BSD101BL1S	Bullnose Front Bumper	No	No	Yes	Yes
	--	06 - 09	--	FSD061BL1	Front Bumper with Grille Guard	No	No	Yes	Yes
Ram 3500	--	03 - 05	--	FSD031BL1	Front Bumper with Grille Guard	No	No	Yes	Yes
	--	10 - 10	--	FSD101BL1S	Front Bumper with Grille Guard	Yes	No	Yes	Yes
	Excluding Express and Sport	10 - 10	--	BSD101BL1S	Bullnose Front Bumper	No	No	Yes	Yes
Ram 4500	--	06 - 09	--	FSD061BL1	Front Bumper with Grille Guard	No	No	Yes	Yes
	--	03 - 05	--	FSD031BL1	Front Bumper with Grille Guard	No	No	Yes	Yes
	Excluding Express and Sport	10 - 10	--	BSD101BL1S	Bullnose Front Bumper	No	No	Yes	Yes
Ram 5500	--	10 - 10	--	FSD101BL1S	Front Bumper with Grille Guard	Yes	No	Yes	Yes
	Excluding Express and Sport	10 - 10	--	BSD101BL1S	Bullnose Front Bumper	No	No	Yes	Yes
Ford									
F-150	--	24 - 24	3	FSF24HBL1	Front Bumper with Grille Guard	Yes	Yes	Yes	Yes
		24 - 24	3	BSF21HBL1	Bullnose Front Bumper	Yes	Yes	Yes	Yes
		21 - 23	3	FSF21HBL1	Front Bumper with Grille Guard	Yes	No	Yes	Yes
		21 - 23	3	FSF21HBL1C	Front Bumper with Grille Guard	Yes	Yes	Yes	Yes
		21 - 23	3	BSF21HBL1	Bullnose Front Bumper	Yes	Yes	Yes	Yes
		18 - 20	--	FSF18HBL1	Front Bumper with Grille Guard	No	Yes	Yes	Yes
		18 - 20	--	BSF18HBL1	Bullnose Front Bumper	No	No	Yes	Yes
		15 - 17	--	FSF15HBL1	Front Bumper with Grille Guard	Yes	Yes	Yes	Yes
		15 - 17	--	BSF15HBL1	Bullnose Front Bumper	No	No	Yes	Yes
		09 - 14	--	FSF09HBL1	Front Bumper with Grille Guard	Yes	Yes	Yes	Yes
F-250 Super Duty	--	23 - 24	--	BSF231BL1	Bullnose Front Bumper	Yes	Yes	Yes	Yes
		23 - 24	--	FSF231BL1	Front Bumper with Grille Guard	Yes	Yes	Yes	Yes
		17 - 22	--	FSF201BL1C	Front Bumper with Grille Guard	--	Yes	Yes	Yes
		17 - 22	--	FSF201BL1	Front Bumper with Grille Guard	--	No	Yes	Yes
		17 - 22	--	BSF201BL1	Bullnose Front Bumper	--	Yes	Yes	Yes
		11 - 16	--	FSF111BL1	Front Bumper with Grille Guard	Yes	No	Yes	Yes
		11 - 11	--	BSF111BL1	Bullnose Front Bumper	No	No	Yes	Yes

1. Includes knock out for engine block heater plug
2. Requires cutting of the plastic bumper

3. Will lose functionality of motorized air dam
- * Continued while supplies last

Applications continued on the following page

Summit Series Bumpers

Make / Model	Style	Years	FN	Part #	Product Description	Retains			
						Park Sens	Frnt Cam	Tow Hks	Fog Lts
Ford (continued)									
F-350 Super Duty	--	23 - 24	--	BSF231BL1	Bullnose Front Bumper	Yes	Yes	Yes	Yes
		23 - 24	--	FSF231BL1	Front Bumper with Grille Guard	Yes	Yes	Yes	Yes
		17 - 22	--	FSF201BL1C	Front Bumper with Grille Guard	--	Yes	Yes	Yes
		17 - 22	--	FSF201BL1	Front Bumper with Grille Guard	--	No	Yes	Yes
		17 - 22	--	BSF201BL1	Bullnose Front Bumper	--	Yes	Yes	Yes
		11 - 16	--	FSF111BL1	Front Bumper with Grille Guard	Yes	No	Yes	Yes
		11 - 16	--	BSF111BL1	Bullnose Front Bumper	No	No	Yes	Yes
F-450 Super Duty	--	23 - 24	--	BSF231BL1	Bullnose Front Bumper	Yes	Yes	Yes	Yes
		23 - 24	--	FSF231BL1	Front Bumper with Grille Guard	Yes	Yes	Yes	Yes
		17 - 22	--	BSF201BL1	Bullnose Front Bumper	--	Yes	Yes	Yes
		11 - 16	--	FSF111BL1	Front Bumper with Grille Guard	Yes	No	Yes	Yes
		11 - 16	--	BSF111BL1	Bullnose Front Bumper	No	No	Yes	Yes
F-550 Super Duty	--	23 - 24	--	BSF231BL1	Bullnose Front Bumper	Yes	Yes	Yes	Yes
		23 - 24	--	FSF231BL1	Front Bumper with Grille Guard	Yes	Yes	Yes	Yes
		17 - 22	--	BSF201BL1	Bullnose Front Bumper	--	Yes	Yes	Yes
		11 - 16	--	FSF111BL1	Front Bumper with Grille Guard	Yes	No	Yes	Yes
		11 - 16	--	BSF111BL1	Bullnose Front Bumper	No	No	Yes	Yes
GMC									
Sierra 1500	Excluding AT4X	22 - 25	--	FSG22HBL1	Front Bumper with Grille Guard	Yes	Yes	Yes	Yes
	--	16 - 18	--	FSG16HBL1	Front Bumper with Grille Guard	Yes	No	Yes	Yes
		14 - 15	--	FSG14HBL1	Front Bumper with Grille Guard	Yes	No	Yes	Yes
		07 - 13	--	FSG08HBL1	Front Bumper with Grille Guard	No	No	Yes	Yes
		07 - 13	--	BSG08HBL1*	Bullnose Front Bumper	No	No	Yes	Yes
		03 - 06	--	FSG03HBL1	Front Bumper with Grille Guard	No	No	Yes	Yes
Sierra 1500 Classic	--	07 - 07	--	FSG03HBL1	Front Bumper with Grille Guard	No	No	Yes	Yes
Sierra 1500 Limited	--	19 - 19	--	FSG16HBL1	Front Bumper with Grille Guard	Yes	No	Yes	Yes
Sierra 2500 HD	--	20 - 23	1	FSG201BL1C	Front Bumper with Grille Guard	Yes	Yes	Yes	Yes
		20 - 23	1	FSG201BL1	Front Bumper with Grille Guard	Yes	No	Yes	Yes
		15 - 19	--	FSG151BL1	Front Bumper with Grille Guard	Yes	No	Yes	Yes
		07 - 10	--	FSG081BL1*	Front Bumper with Grille Guard	No	No	Yes	Yes
		03 - 06	--	FSG031BL1	Front Bumper with Grille Guard	No	No	Yes	Yes
Sierra 2500 HD Classic	--	07 - 07	--	FSG031BL1	Front Bumper with Grille Guard	No	No	Yes	Yes
Sierra 3500	--	03 - 06	--	FSG031BL1	Front Bumper with Grille Guard	No	No	Yes	Yes
Sierra 3500 Classic	--	07 - 07	--	FSG031BL1	Front Bumper with Grille Guard	No	No	Yes	Yes
Sierra 3500 HD	--	20 - 23	1	FSG201BL1C	Front Bumper with Grille Guard	Yes	Yes	Yes	Yes
		20 - 23	1	FSG201BL1	Front Bumper with Grille Guard	Yes	No	Yes	Yes
		15 - 19	--	FSG151BL1	Front Bumper with Grille Guard	Yes	No	Yes	Yes
		07 - 10	--	FSG081BL1*	Front Bumper with Grille Guard	No	No	Yes	Yes

1. Includes knock out for engine block heater plug
2. Requires cutting of the plastic bumper

3. Will lose functionality of motorized air dam
- * Continued while supplies last

Applications continued on the following page

Summit Series Bumpers

Make / Model	Style	Years	FN	Part #	Product Description	Retains			
						Park Sens	Frnt Cam	Tow Hks	Fog Lts
Ram									
1500	Excluding Rebel or diesel	19 - 24	--	FSD19HBL1C	Front Bumper with Grille Guard	Yes	Yes	No	Yes
	Excluding Express, Sport, and Tradesman	13 - 18	--	FSD13HBL1	Front Bumper with Grille Guard	No	No	Yes	Yes
1500 Classic	Excluding Express, Sport, and Tradesman	19 - 24	--	FSD13HBL1	Front Bumper with Grille Guard	No	No	Yes	Yes
2500	--	19 - 24	--	FSD191BL1C	Front Bumper with Grille Guard	Yes	Yes	Yes	Yes
		19 - 24	--	FSD191BL1	Front Bumper with Grille Guard	Yes	No	Yes	Yes
		11 - 18	--	FSD101BL1S	Front Bumper with Grille Guard	Yes	No	Yes	Yes
	Excluding Express and Sport	11 - 18	--	BSD101BL1S	Bullnose Front Bumper	No	No	Yes	Yes
3500	--	19 - 24	--	FSD191BL1C	Front Bumper with Grille Guard	Yes	Yes	Yes	Yes
		19 - 24	--	FSD191BL1	Front Bumper with Grille Guard	Yes	No	Yes	Yes
		11 - 18	--	FSD101BL1S	Front Bumper with Grille Guard	Yes	No	Yes	Yes
	Excluding Express and Sport	11 - 18	--	BSD101BL1S	Bullnose Front Bumper	No	No	Yes	Yes
4500	--	11 - 18	--	FSD101BL1S	Front Bumper with Grille Guard	Yes	No	Yes	Yes
	Excluding Express and Sport	11 - 18	--	BSD101BL1S	Bullnose Front Bumper	No	No	Yes	Yes
5500	--	11 - 18	--	FSD101BL1S	Front Bumper with Grille Guard	Yes	No	Yes	Yes
	Excluding Express and Sport	11 - 18	--	BSD101BL1S	Bullnose Front Bumper	No	No	Yes	Yes
Toyota									
Tundra	--	14 - 21	2	FST14HBL1	Front Bumper with Grille Guard	No	No	Yes	Yes
		14 - 21	2	BST14HBL1	Bullnose Front Bumper	No	Yes	Yes	Yes
		07 - 13	2	FST07HBL1	Front Bumper with Grille Guard	No	No	Yes	Yes

1. Includes knock out for engine block heater plug

2. Requires cutting of the plastic bumper

3. Will lose functionality of motorized air dam

* Continued while supplies last

SPORT™ SERIES





TAME THE WILD & UNTAMABLE.

Trusted by fire and wildland teams across the nation, the Sport™ series is built tough for those who brave challenges that others elude. Fabricated by hand in Shiner, Texas, and capable of housing a 16,500 lb. winch, it's built to protect and recover you from any kind of mishap you encounter on the backroads or jobsite.

SPORT™ FRONT BUMPER WITH GRILLE GUARD

Product Details

- Winch compatible on most models
- Rated for up to 16,500 lbs. of heavy-duty work and recovery
- High-strength, 1/4" formed C-channel and 3/16" thick diamond-plate steel construction for heavy-duty use
- One-piece welded fabrication prevents rattling
- Perforated 12-gauge steel protects the truck grille from brush and road debris
- Constructed with 5/16" uprights for high-tensile strength and unrivaled toughness and durability
- Custom punched grille inserts to match truck manufacturer's grille pattern
- Comes standard with 2" receiver for towing or other attachments
- Tough polyester black powder coat finish for superior corrosion resistance
- Retains factory fog lights and tow hooks (if equipped)
- Compatible with front-facing sensors (Options available to accommodate front-facing cameras)

See page 62 for application information



Built tough to handle the harshest conditions.



The Sport front bumper with grille guard is built for heavy-duty work and recovery and is made to mount a 16,500 lb. winch



Fabricated from high-strength, 1/4" formed C-channel steel and 3/16" diamond-plate steel for unrivaled strength and durability



Comes standard with a 12-gauge, wrap-around full grille guard and 2" receiver for towing or other attachments

Finish & Material

Finish:
Gloss black powder coat

Material:
Carbon steel



Ram 5500

BUMPER ACCESSORIES

Universal Rubber Upright Pads

- Rubber stripping to protect grille guard uprights and finish
- Constructed from tough black rubber
- Easy, friction-fit installation
- Includes two rubber strips

Part #	Fits
RUPU	Legend grille guard and Legend, Summit, and Sport front bumpers with grille guard



SPORT™ REAR BUMPER

Product Details

- High-strength, 1/4" formed C-channel and 3/16" thick diamond-plate steel construction for heavy-duty use
- Tough black powder coat finish for corrosion resistance
- Built-in bumper step for easier truck bed access
- Comes standard with 6" LED oval lights for improved rear visibility
- Compatible with factory towing receiver hitch

See page 62 for application information



Built right to protect and enhance safety.



Made from solid 3/16" formed C-channel and a diamond-plate steel construction for unrivaled strength and durability



Features built-in side-pocketed steps that provide easy, comfortable truck bed access (select applications)



Comes standard with backup / work lights and retains use of your factory hitch for added convenience when upgrading

Finish & Material



Finish:
Gloss black powder coat

Material:
Carbon steel



Ford F-250 Super Duty

BUMPER ACCESSORIES

6" Oval LED Light

- Designed for use as a back-up light or flood light for extra nighttime visibility
- 6" wide, flush-mount style flood light with oval design provides improved rear visibility
- Constructed with LEDs for bright, long-lasting light
- Blunt-cut wires for easy installation
- Includes one LED light only

Part #	Fits
LEDLIGHTCLEAR	Select Legend and Sport rear bumpers



LEDLIGHTCLEAR



LED License Plate Light

- Provides nighttime visibility to license plate
- Fits Ranch Hand rear bumper license plate light hole
- Constructed with LEDs for bright, long-lasting light
- Blunt-cut wires for easy installation
- Includes one LED light only

Part #	Fits
LEDLICENSELIGHT	Midnight, Legend, and Sport rear bumpers



LEDLICENSELIGHT





Scan for current applications
or visit ranchhand.com



SPORT™ SERIES APPLICATION GUIDE

Sport Series Bumpers

Make / Model	Style	Years	Footnote	Part #	Product Description	Retains			
						Park Sens	Frnt Cam	Tow Hks	Fog Lts
Chevrolet									
Silverado 1500	Side exhaust only	19 - 25	3	SBC201BLSL	Rear Bumper	Yes	--	Yes	Yes
	Dual exhaust only	19 - 25	3	SBC19HBLSE	Rear Bumper	Yes	--	Yes	Yes
	--	14 - 18	3	SBC14HBLSL	Rear Bumper	Yes	--	No	Yes
		07 - 13	1, 3	SBC08HBLSL	Rear Bumper	Yes	--	Yes	Yes
Silverado 1500 LD	--	19 - 19	3	SBC14HBLSL	Rear Bumper	Yes	--	No	Yes
Silverado 1500 LTD	Dual exhaust only	22 - 22	3	SBC19HBLSE	Rear Bumper	Yes	--	Yes	Yes
Silverado 2500 / 3500 HD	--	20 - 25	3	SBC201BLSL	Rear Bumper	Yes	--	Yes	Yes
		15 - 19	2	FBC155BLR	Front Bumper with Grille Guard	Yes	No	Yes	Yes
		15 - 19	3	SBC151BLSL	Rear Bumper	Yes	--	Yes	Yes
		11 - 14	2	FBC115BLR	Front Bumper with Grille Guard	No	No	Yes	Yes
		11 - 14	1, 3	SBC111BLSL	Rear Bumper	Yes	--	Yes	Yes
07 - 10	3	SBC081BLSL	Rear Bumper	Yes	--	Yes	Yes		
Dodge									
Ram 1500	Side exhaust only	09 - 10	3	SBD09HBLSL	Rear Bumper	Yes	--	Yes	Yes
	Dual exhaust only	09 - 10	3	SBD09HBLSE	Rear Bumper	Yes	--	Yes	Yes
	--	06 - 09	2	FBD065BLR	Front Bumper with Grille Guard	No	No	Yes	Yes
	Mega Cab	06 - 08	3	SBD031BLL	Rear Bumper	No	--	Yes	Yes
Ram 2500 / 3500	--	10 - 10	2	FBD105BLRS	Front Bumper with Grille Guard	Yes	No	Yes	Yes
	Side exhaust only	10 - 10	3	SBD09HBLSL	Rear Bumper	Yes	--	Yes	Yes
		06 - 09	2	FBD065BLR	Front Bumper with Grille Guard	No	No	Yes	Yes
03 - 09	3	SBD031BLL	Rear Bumper	No	--	Yes	Yes		
Ram 4500	--	10 - 10	2	FBD105BLRS	Front Bumper with Grille Guard	Yes	No	Yes	Yes
Ram 5500	--	10 - 10	2	FBD105BLRS	Front Bumper with Grille Guard	Yes	No	Yes	Yes

1. Can get to spare but cannot use lock
2. Winch capacity of 15,000 lbs.

3. Retains factory receiver
* Continued while supplies last

Sport Series Bumpers

Make / Model	Style	Years	Footnote	Part #	Product Description	Retains			
						Park Sens	Frnt Cam	Tow Hks	Fog Lts
Ford									
Excursion	--	00 - 04	2	FBF995BLR	Front Bumper with Grille Guard	No	No	No	Yes
F-150	Excl. Tremor or models w/ brushed alum. tailgate panel	21 - 23	3	SBF21HBLSL	Rear Bumper	Yes	--	--	--
		15 - 20	3	SBF15HBLSL	Rear Bumper	Yes	--	Yes	Yes
	Crew cab	09 - 14	3	SBF09HBLSL	Rear Bumper	Yes	--	Yes	Yes
F-250 / F-350 Super Duty	--	23 - 24	2	FBF235BLR	Front Bumper with Grille Guard	Yes	Yes	No	Yes
		17 - 22	2	FBF205BLR	Front Bumper with Grille Guard	--	Yes	Yes	Yes
		17 - 23	3	SBF231BLSL	Rear Bumper	Yes	--	--	--
		16 - 16	3	SBF161BLSL	Rear Bumper	Yes	--	Yes	Yes
		11 - 16	2	FBF115BLR	Front Bumper with Grille Guard	No	No	Yes	Yes
		08 - 15	3	SBF081BLSL	Rear Bumper	Yes	--	Yes	Yes
F-450 Super Duty	--	23 - 24	2	FBF995BLR	Front Bumper with Grille Guard	No	No	No	Yes
		17 - 23	3	SBF231BLSL	Rear Bumper	Yes	--	--	--
		11 - 16	2	FBF115BLR	Front Bumper with Grille Guard	No	No	Yes	Yes
		99 - 04	2	FBF995BLR	Front Bumper with Grille Guard	No	No	No	Yes
F-550 Super Duty	--	23 - 24	2	FBF235BLR	Front Bumper with Grille Guard	Yes	Yes	No	Yes
		11 - 16	2	FBF115BLR	Front Bumper with Grille Guard	No	No	Yes	Yes
		99 - 04	2	FBF995BLR	Front Bumper with Grille Guard	No	No	No	Yes
GMC									
Sierra 1500	Side exhaust only	19 - 25	3	SBC201BLSL	Rear Bumper	Yes	--	Yes	Yes
	Dual exhaust only	19 - 25	3	SBC19HBLSE	Rear Bumper	Yes	--	Yes	Yes
	--	14 - 18	3	SBC14HBLSL	Rear Bumper	Yes	--	No	Yes
		07 - 13	1, 3	SBC08HBLSL	Rear Bumper	Yes	--	Yes	Yes
Sierra 1500 Limited	Dual exhaust only	22 - 22	3	SBC19HBLSE	Rear Bumper	Yes	--	Yes	Yes
	--	19 - 19	3	SBC14HBLSL	Rear Bumper	Yes	--	No	Yes
Sierra 2500 / 3500 HD	--	20 - 25	3	SBC201BLSL	Rear Bumper	Yes	--	Yes	Yes
		15 - 19	3	SBC151BLSL	Rear Bumper	Yes	--	Yes	Yes
		11 - 14	1, 3	SBC111BLSL	Rear Bumper	Yes	--	Yes	Yes
		07 - 10	3	SBC081BLSL	Rear Bumper	Yes	--	Yes	Yes
Ram									
1500	Side exhaust only, excluding diesel	19 - 25	3	SBD19HBLSL	Rear Bumper	Yes	--	Yes	Yes
	Dual exhaust only	19 - 25	3	SBD19HBLSE	Rear Bumper	Yes	--	Yes	Yes
	Side exhaust only	11 - 18	3	SBD09HBLSL	Rear Bumper	Yes	--	Yes	Yes
	Dual exhaust only	11 - 18	3	SBD09HBLSE	Rear Bumper	Yes	--	Yes	Yes
1500 Classic	Side exhaust only	19 - 24	3	SBD09HBLSL	Rear Bumper	Yes	--	Yes	Yes
	Dual exhaust only	19 - 24	3	SBD09HBLSE	Rear Bumper	Yes	--	Yes	Yes
2500 / 3500	--	19 - 24	2	FBD195BLRC	Front Bumper with Grille Guard	Yes	Yes	Yes	Yes
		19 - 24	3	SBD191BLSL	Rear Bumper	Yes	--	Yes	Yes
		11 - 18	2	FBD105BLRS	Front Bumper with Grille Guard	Yes	No	Yes	Yes
	Side exhaust only	11 - 18	3	SBD09HBLSL	Rear Bumper	Yes	--	Yes	Yes
4500 / 5500	--	11 - 18	2	FBD105BLRS	Front Bumper with Grille Guard	Yes	No	Yes	Yes
Toyota									
Tundra	--	14 - 21	3	SBT14HBLL	Rear Bumper	No	--	Yes	Yes
		07 - 13	3	SBT071BLL	Rear Bumper	No	--	Yes	Yes

1. Can get to spare but cannot use lock
 2. Winch capacity of 15,000 lbs.

3. Retains factory receiver
 * Continued while supplies last



LIMITED LIFETIME WARRANTY

RANCH HAND provides limited lifetime warranty coverage against defects in factory workmanship and materials for RANCH HAND products ("Products") sold by factory authorized dealers for use by retail (end use) consumers. This Limited Warranty is provided only to the original Product consumer, and applies only to the original installation. This Limited Warranty is not transferrable and does not extend or apply to anyone else. For consumers in the U.S.: this Limited Warranty gives you specific legal rights; you also may have other rights, which vary from state to state.

This Limited Warranty is the sole and exclusive warranty provided by RANCH HAND, and all other warranties and conditions are excluded and disclaimed. **UNDER THE LAW OF CERTAIN STATES, THERE MAY BE NO IMPLIED CONDITIONS OR WARRANTIES FROM RANCH HAND APPLICABLE TO YOUR PRODUCT, AND ALL IMPLIED CONDITIONS OR WARRANTIES (INCLUDING ANY WARRANTY OF MERCHANTABILITY OR FITNESS FOR A PARTICULAR PURPOSE) ARE EXCLUDED AND DISCLAIMED WHERE ALLOWED BY LAW.** If implied warranties are imposed under any applicable state law, all such implied warranties are limited to the duration of the applicable provisions of this Limited Warranty. For consumers in the U.S.: some states do not allow limitations on how long an implied warranty lasts, so the above limitation may not apply to you.

COVERED PRODUCTS AND LIMITATIONS

RANCH HAND provides the following Limited Warranty coverage:

Product	Workmanship & Materials	Components & Parts	Finishings & Coatings
All powder coat over carbon steel	Limited lifetime	1-year	1-year
Electrical and wiring	1-year	1-year	1-year
Other accessories	Limited lifetime	1-year	1-year

Each of the warranty coverage periods runs from the date of purchase of the Product (proof of purchase is required) and applies only to warranted defects that first occur and are reported to RANCH HAND within the applicable warranty period. RANCH HAND retains the right to determine to its reasonable satisfaction whether any claimed defect is covered by this Limited Warranty.

Certain items are excluded from Limited Warranty coverage by RANCH HAND, and this **Limited Warranty coverage does not apply to:**

- Wear and tear from normal use, including damage from road debris
- Improper product selection, application, installation or maintenance
- Modifications, including the attachment of other hardware or components
- Misuse, abuse, overloading, improper trailering or hauling, accident
- Corrosion or damage due to environmental conditions

REMEDIES UNDER THIS LIMITED WARRANTY

If a defect covered by this warranty occurs, RANCH HAND will repair or replace the Product, or refund the purchase price, in its sole discretion. This "repair, replacement or refund" remedy is the **sole and exclusive remedy** under this Limited Warranty. RANCH HAND has **no responsibility or liability for any incidental or consequential damages**, such as loss of use of vehicles or trailers, towing charges, storage charges, labor and service charges for removing or reinstalling products, loss of or damage to personal property, or interest or finance charges, all of which are specifically **excluded and disclaimed** from this Limited Warranty. For consumers in the U.S.: some states do not allow the exclusion or limitation of incidental or consequential damages, so the above limitation or exclusion may not apply to you.

RESPONSIBILITY OF PURCHASER

The Purchaser must have proof of purchase to obtain service under this Limited Warranty. Contact RANCH HAND for a Returned Goods Authorization (RGA) and return instructions; RANCH HAND will not accept Products unless an RGA has been issued. The Purchaser must deliver the Product to RANCH HAND or an authorized RANCH HAND dealer along with the RGA number and proof of purchase.

The RANCH HAND Limited Warranty policy in effect on the date you purchased your Product determines the applicable warranty coverage, and subsequent or prior RANCH HAND warranties are not applicable to your Product. The terms of this Limited Warranty cannot be changed or modified, except by a written agreement signed by an officer of RANCH HAND. RANCH HAND reserves the right to improve its products through changes in design or materials without being obligated to the owners of the Products of the same or similar models.

Contact information:

RANCH HAND Headquarters
6208 Industrial Drive
Eau Claire, WI 54701
800.366.9712



**BUILT BY
OUR HANDS.
BUILT TO
TAKE A HIT.**

Since 1986, Ranch Hand has been hand fabricating the heavy-duty truck bumpers and accessories we're known for today from our shop in Shiner, Texas. Our products are designed and fabricated with careful eyes and working hands out of these same facilities today.

Known as the original 'ranch style' bumper fabricator, our reputation has held up over the years as the best around because our products are fabricated domestically in the USA by talented American welders with steel that's sourced from US steel companies.

Since our start, we've over-engineered our products for strength and quality and have regularly exceeded our customers' expectations. At Ranch Hand, our number one priority is that you, your family, and your vehicle are protected from the unpredictable.



**TO SEE OUR WARRANTY,
VISIT RANCHHAND.COM**



CONNECT WITH US



PHONE
877.287.8634



WEB
RANCHHAND.COM



SOCIAL MEDIA
@RANCHHANDTRUCK
#RANCHHANDTRUCK

LOCATIONS

HEADQUARTERS

6208 INDUSTRIAL DRIVE
EAU CLAIRE, WI 54701

SHINER

959 STATE HIGHWAY 95 NORTH
SHINER, TX 77984